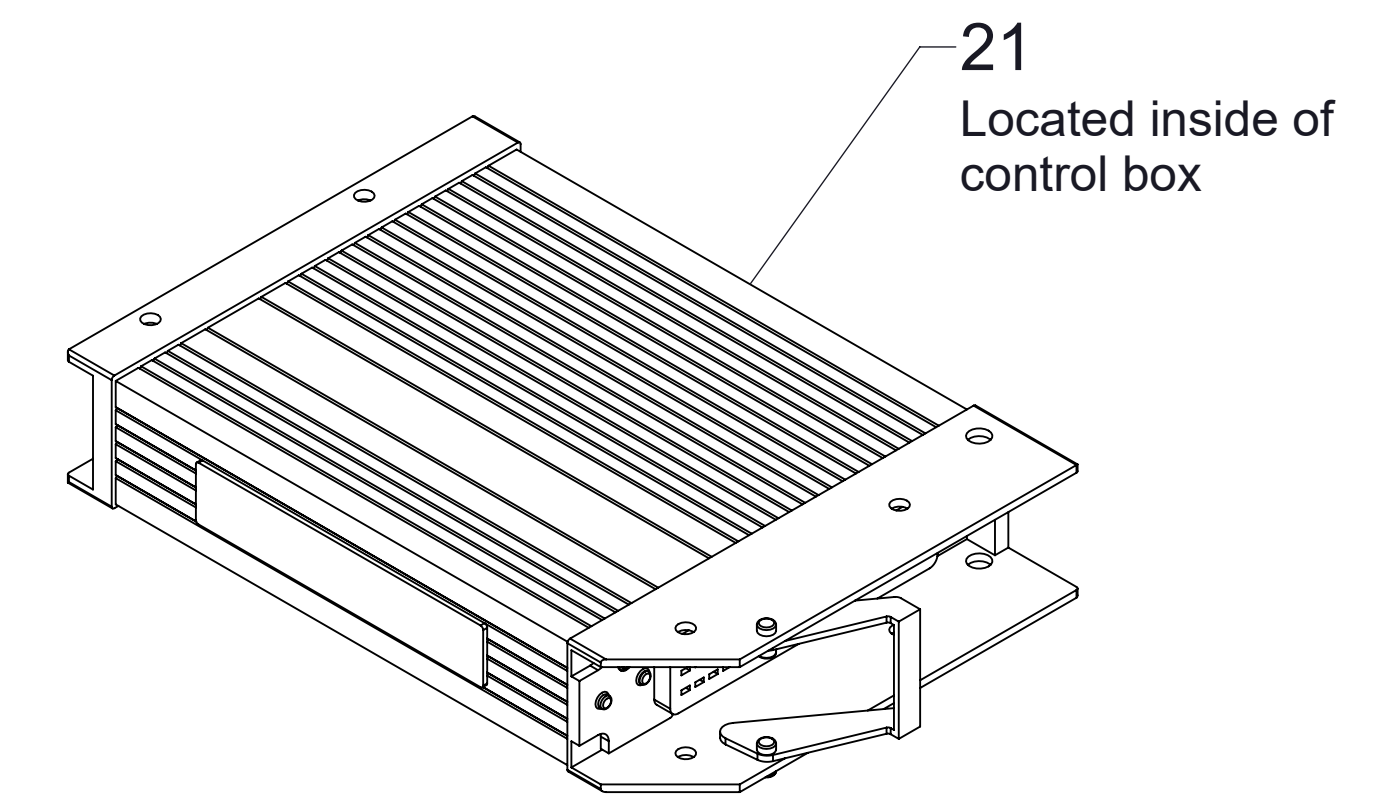
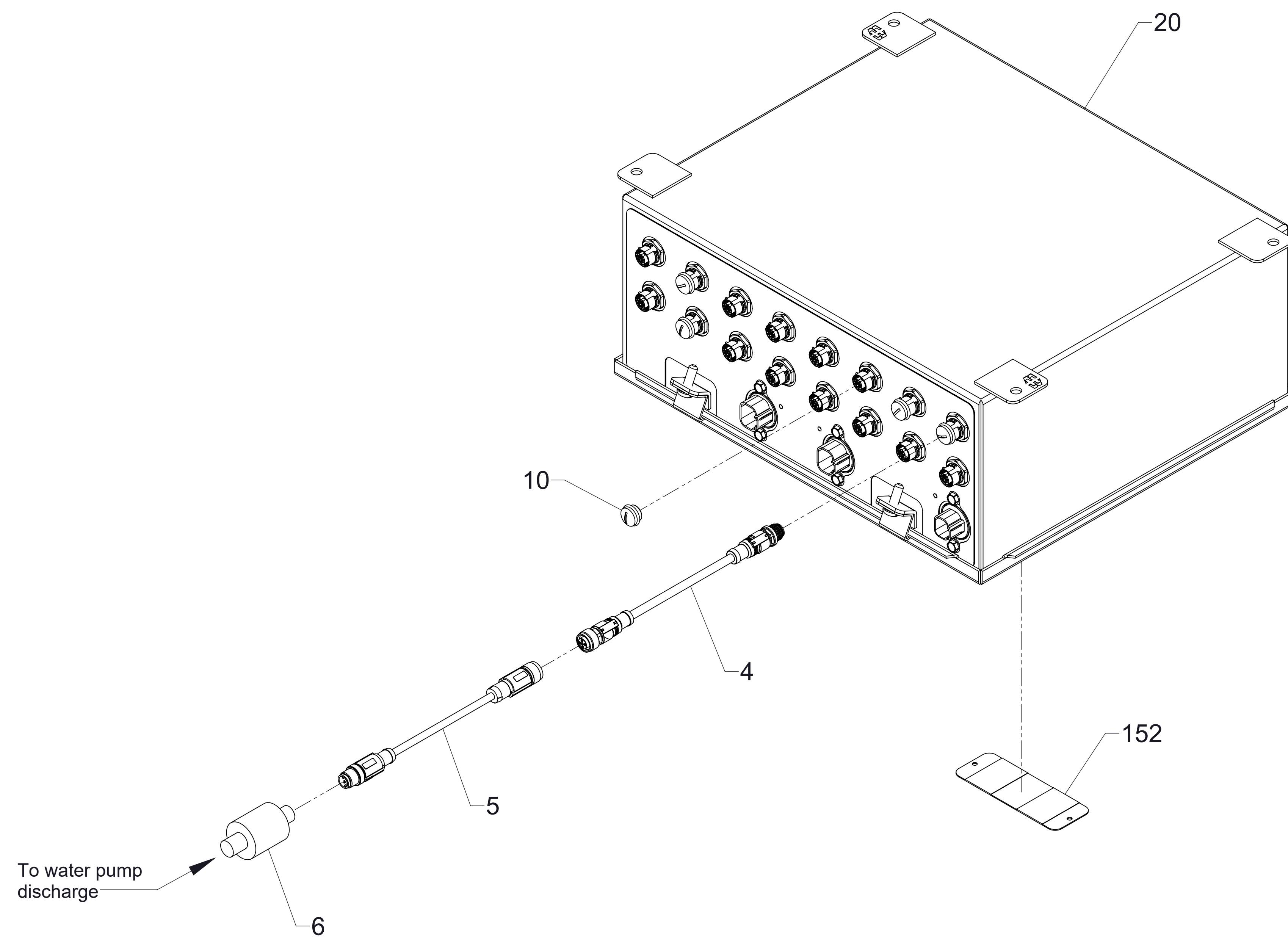


Aquis ULTRAFLOW 160 Foam System Service Parts List

Component		See Page
Control Box		2
Tellurus Control Panel		3
Valves	1 in Discharge Line Assembly	4
	2 in Discharge Line Assembly, 237 GPM Flow	5
	Priming Valve Assembly	6
	Low Flow By-Pass Assembly	7
	Supply Tank Fill Assembly	8
	Concentrate Transfer Assembly	
Foam Concentrate System		9
Hydraulic System		10, 11
Manual Override		12
Additional I/O Node		

Note: Foam Concentrate Plumbing, Water Plumbing,
Hydraulic Hoses, Fittings and Electrical Connections
furnished by Truck Builder.

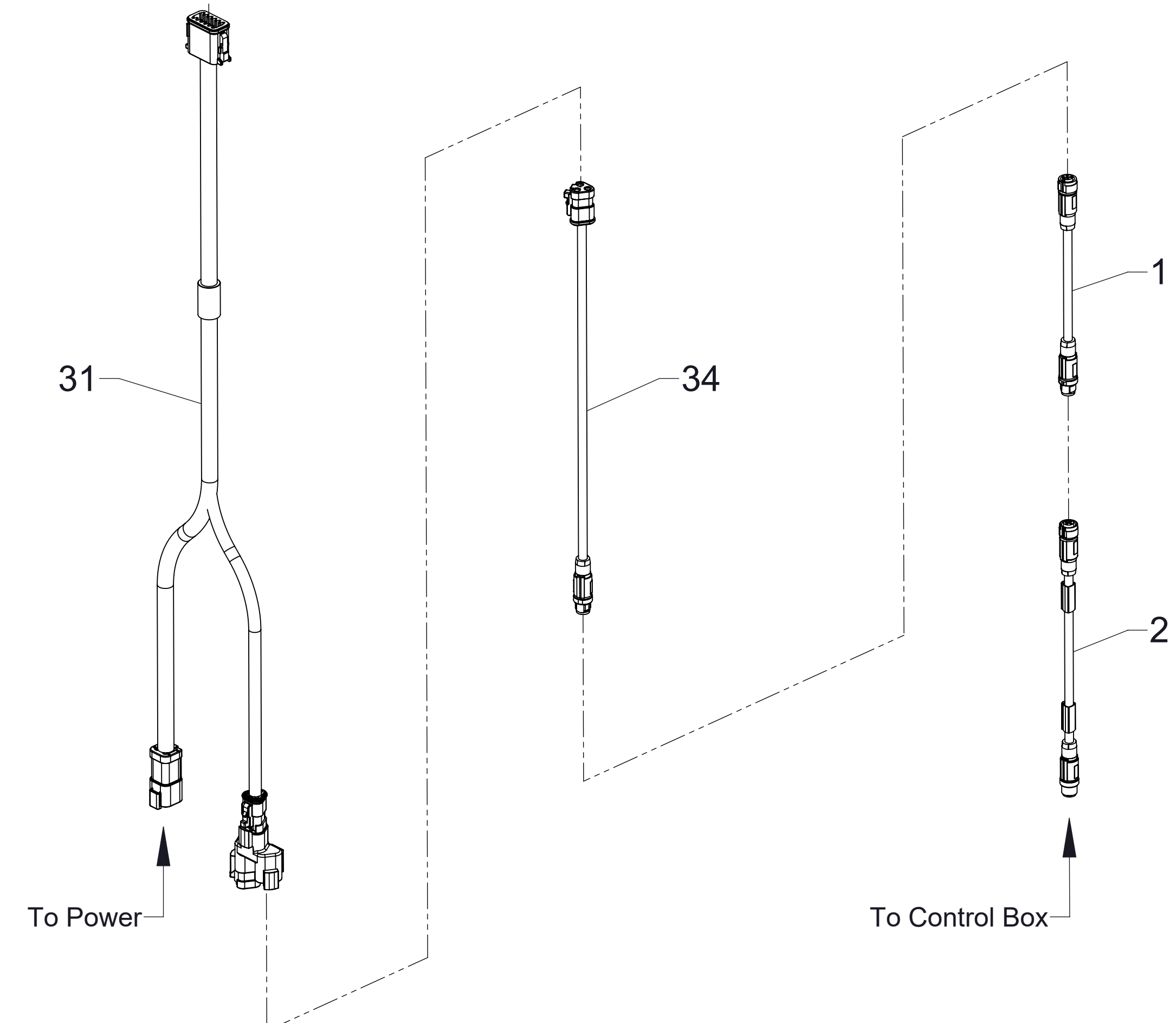
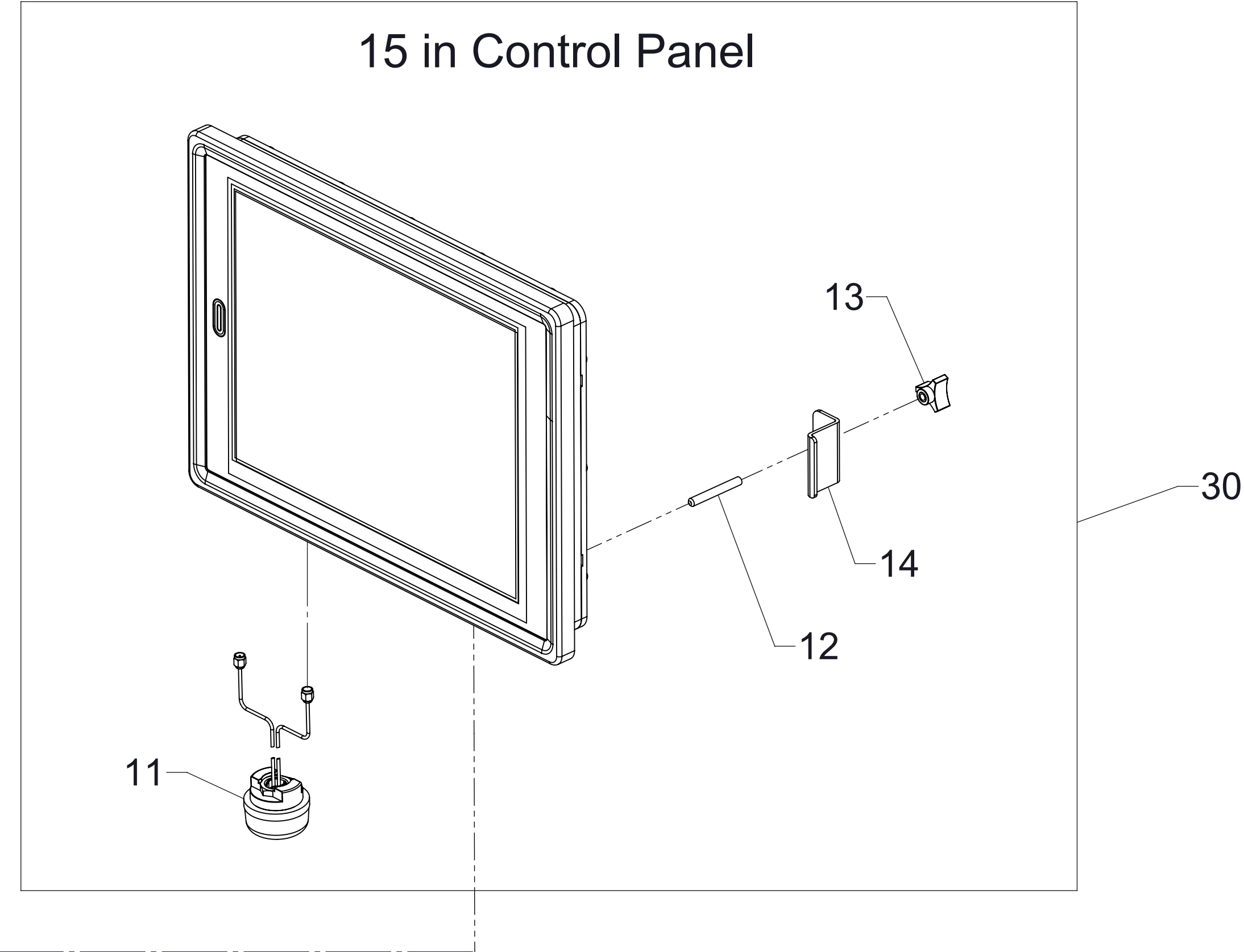
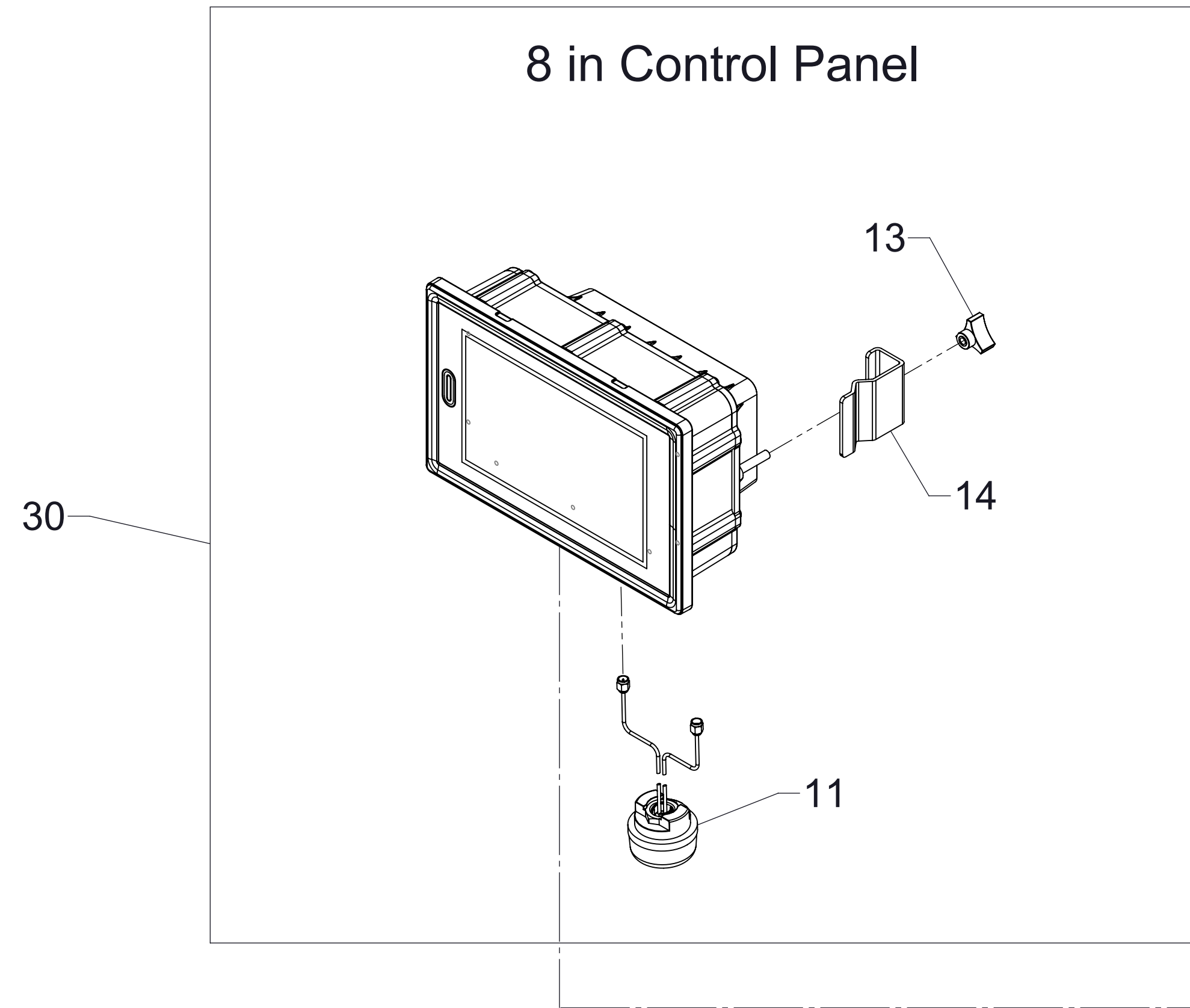
Ref No.	Description
4	Yellow or Gray Sensor Cable, .50 Meters
5	Yellow or Gray Sensor Cable, 3.0 Meters
6	Pressure Transducer, M12 x 1/4 in NPT
10	M12 Sealing Cap
20	Control Box
21	PLC Controller
152	Serial Plate



Control Box
(Single and Dual PLC)

Ref No.	Description
1	Violet CAN Cable, .50 Meters
2	Violet CAN Cable, 2.0 Meters
11	RF Antenna
12	Screw-Socket Set, 1/4-20 x 2 in
13	Three Arm Knob

Ref No.	Description
14	Panel Clamp
30	Tellurus Control Panel, Repairs
31	Tellurus HMI Cable
34	Violet Tellurus CAN Cable

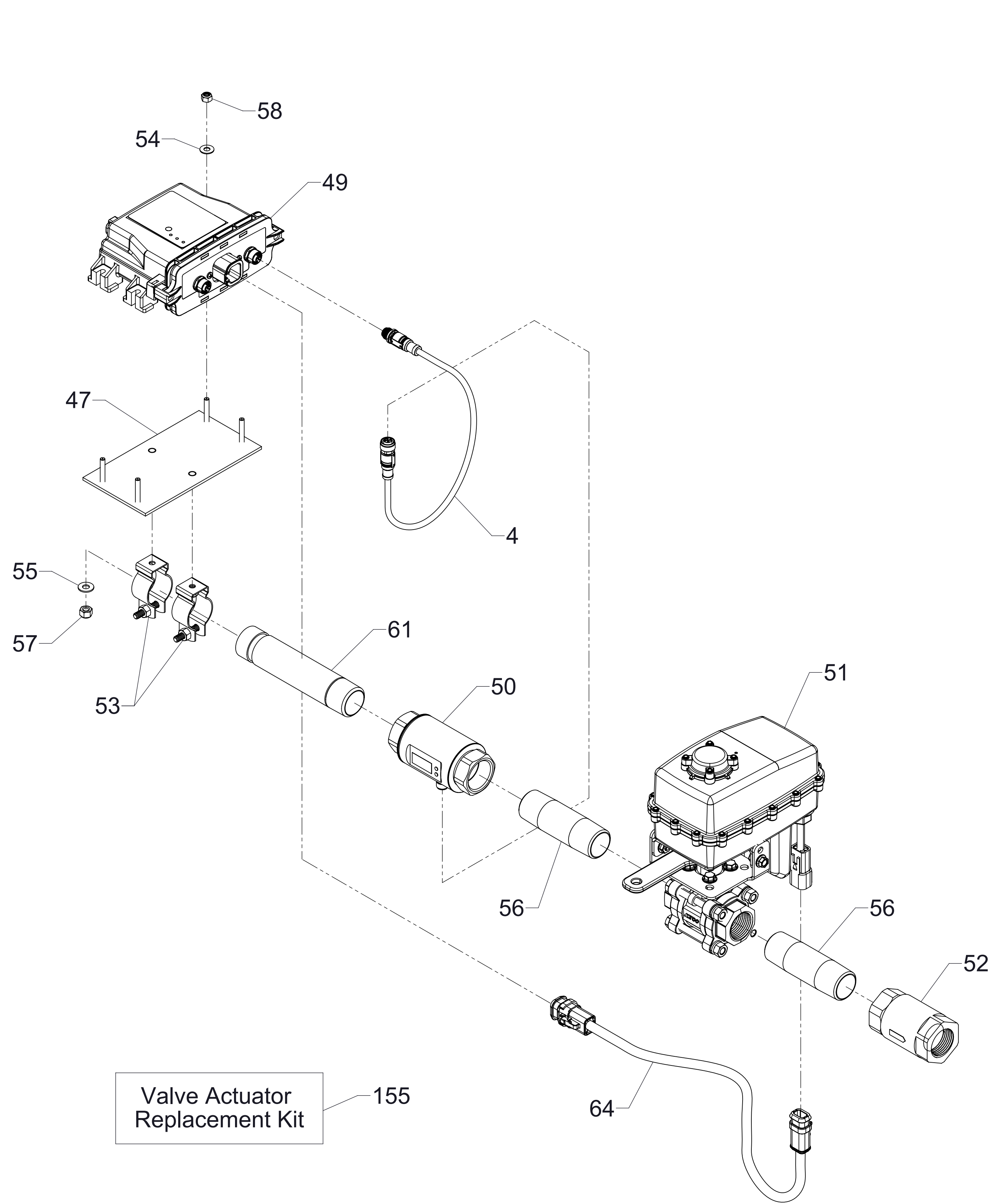


Tellurus Control Panel

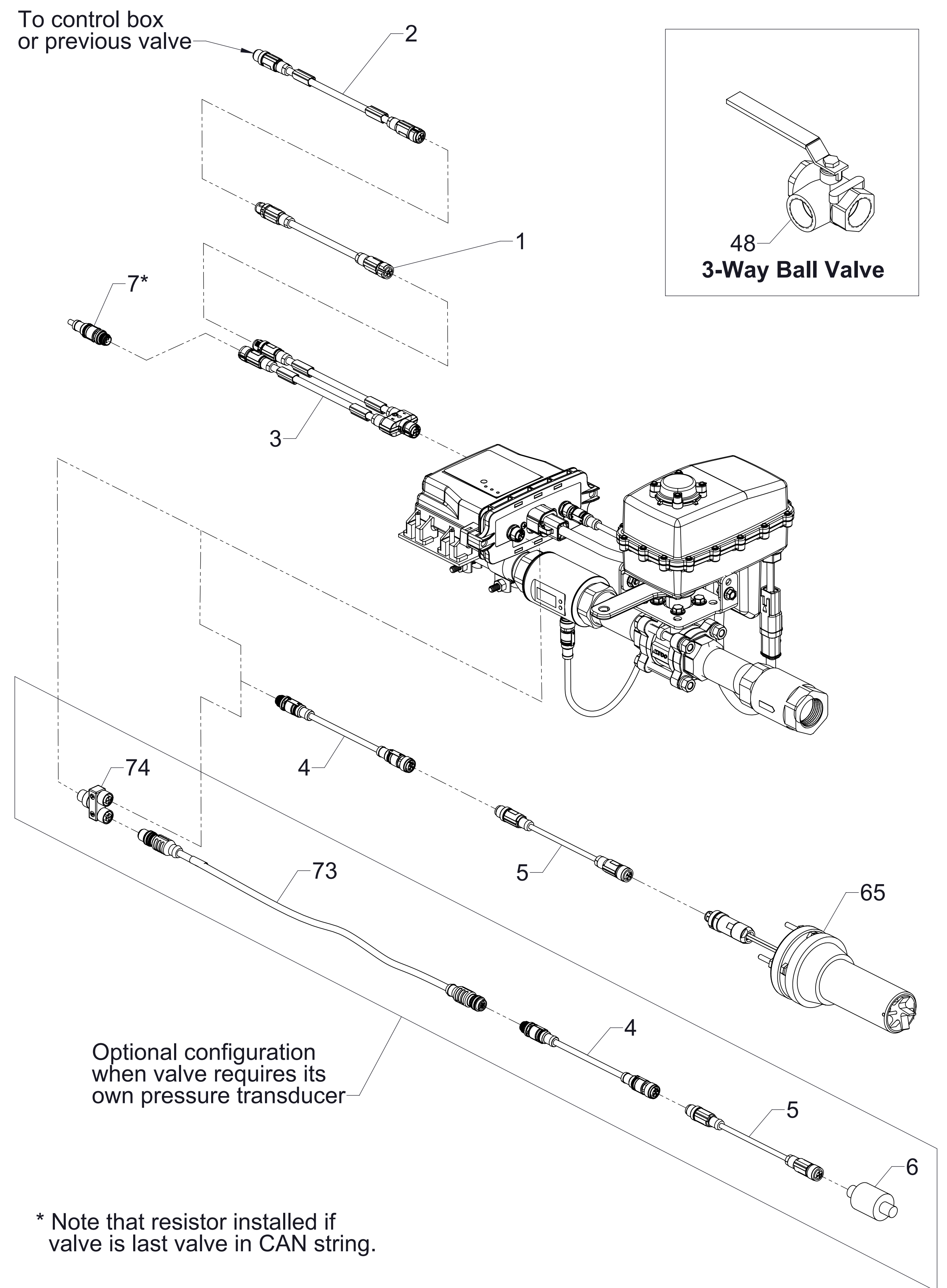
Ref No.	Description
1	Violet CAN Cable, .50 Meters
2	Violet CAN Cable, 2.0 Meters
3	CAN Cable Splitter
4	Yellow or Gray Sensor Cable, .50 Meters
5	Yellow or Gray Sensor Cable, 3.0 Meters
6	Pressure Transducer, M12 x 1/4 in NPT
7*	CAN Termination Resistor
47	Node Mounting Plate

Ref No.	Description
48	Manual 3-Way Ball Valve, 1 in NPT (F)
49	Node Controller
50	Magnetic Flowmeter, 1 in
51	Electric Ball Valve, 1 in, SS
52	Check Valve, 1 in
53	Mounting Clamp, 1 in
54	Plain Washer, 3/16 in, SS
55	Plain Washer, 1/4 in, SS

Ref No.	Description
56	Pipe Nipple, 1 in NPT x 4 in, SS
57	Nylok Hex Nut, 1/4-20, SS
58	Nylok Hex Nut, Finished, 10-32, SS
61	Pipe, 1 in Victaulic x 1 in NPT x 6 in
64	Valve Motor Cable
65	Paddlewheel Flowmeter
73	Pressure Transducer Cable
74	Cable Splitter
155	Valve Actuator Replacement Kit



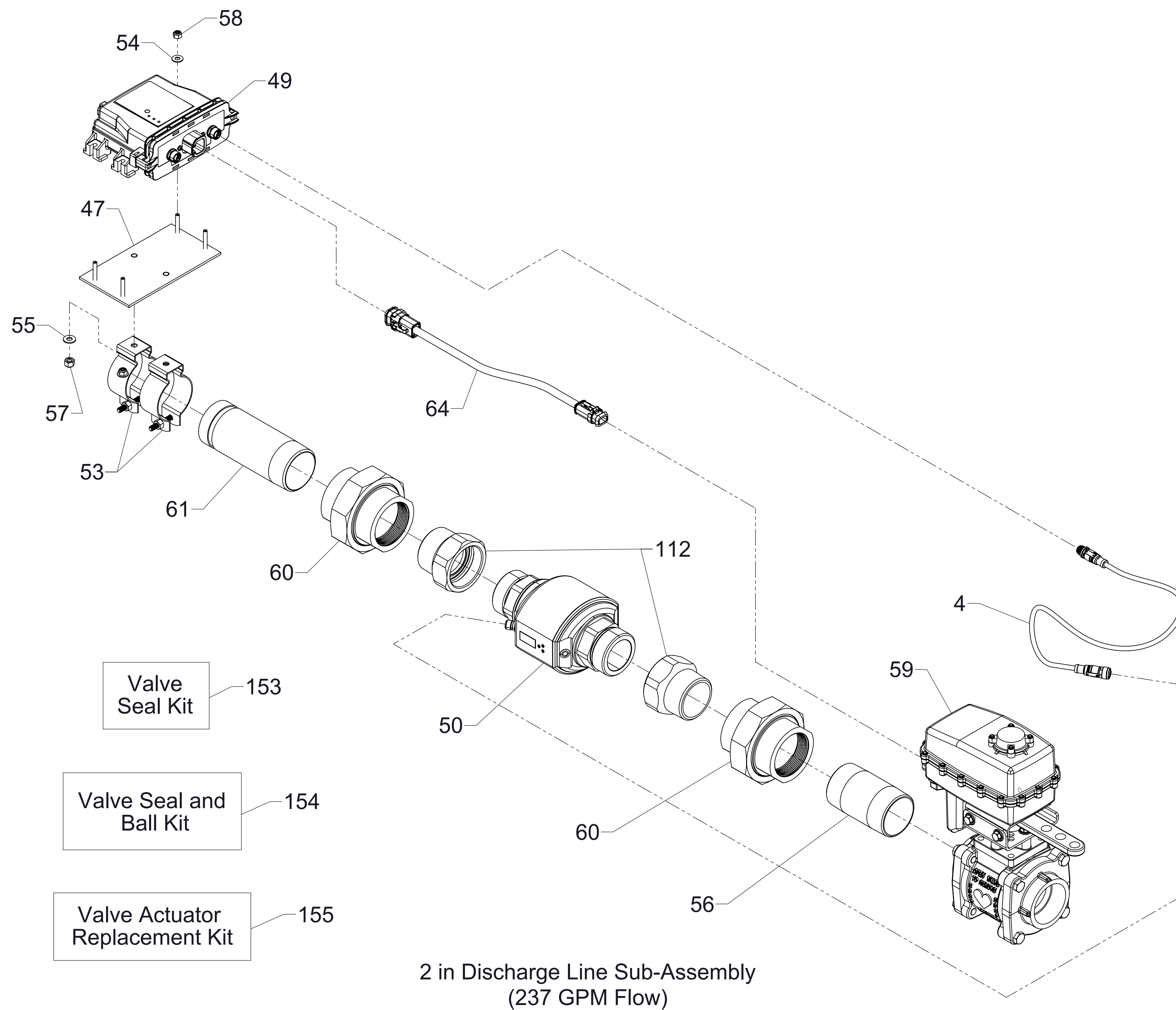
1 in Discharge Line Sub-Assembly



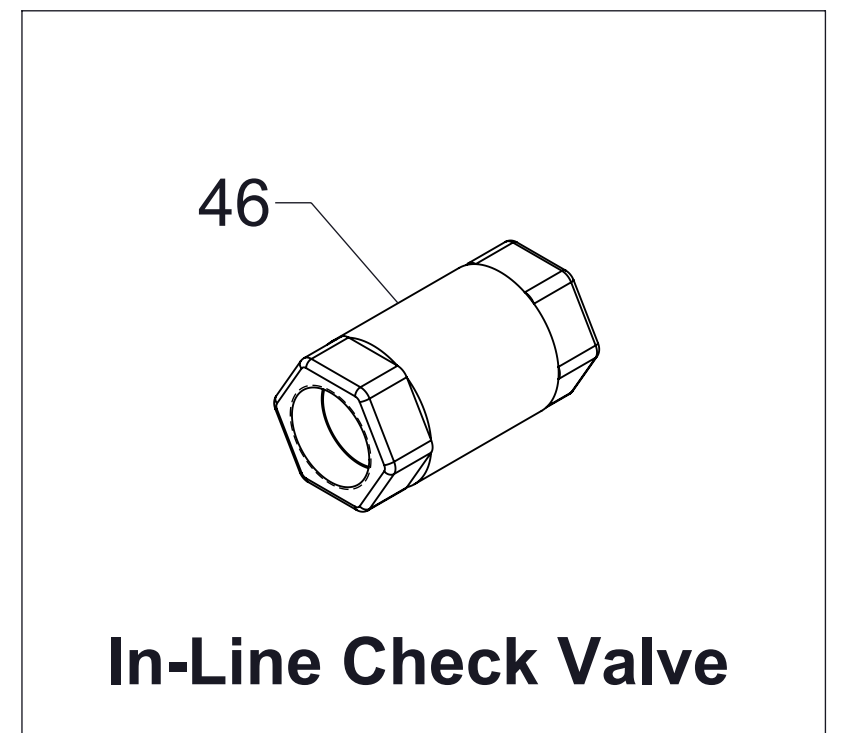
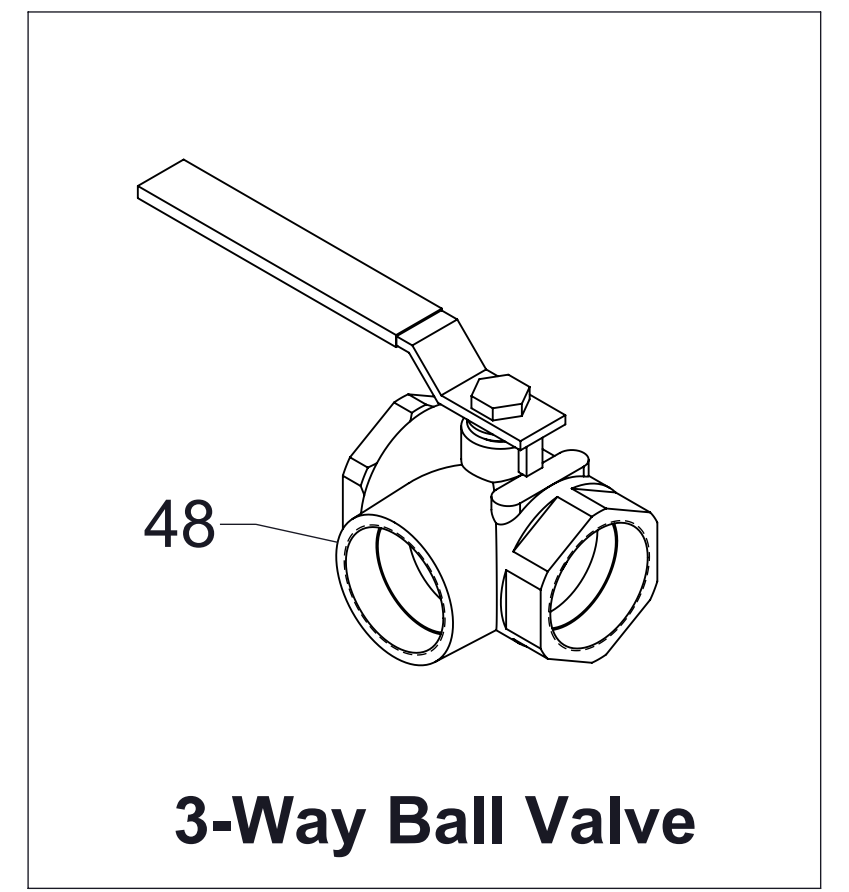
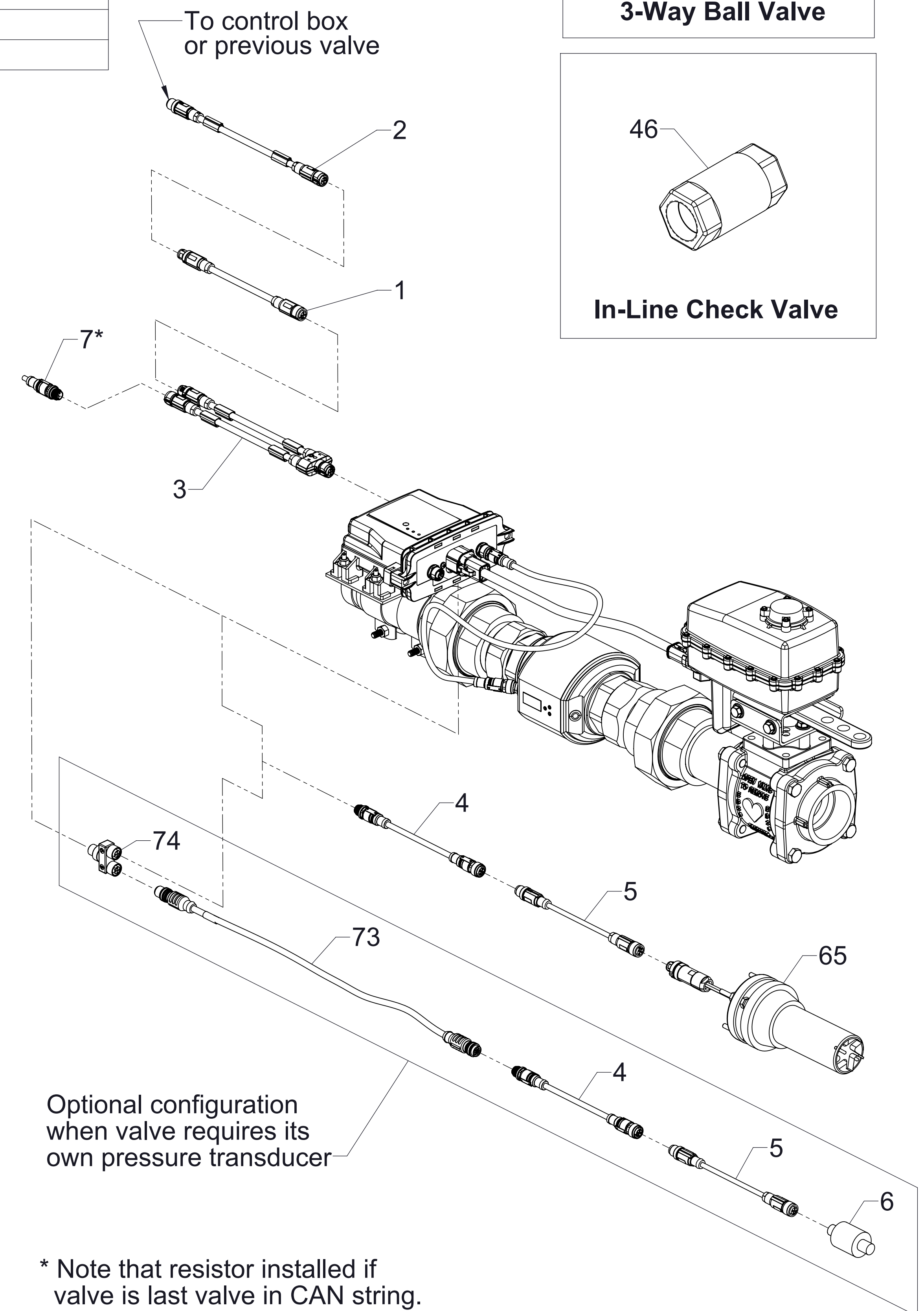
* Note that resistor installed if valve is last valve in CAN string.

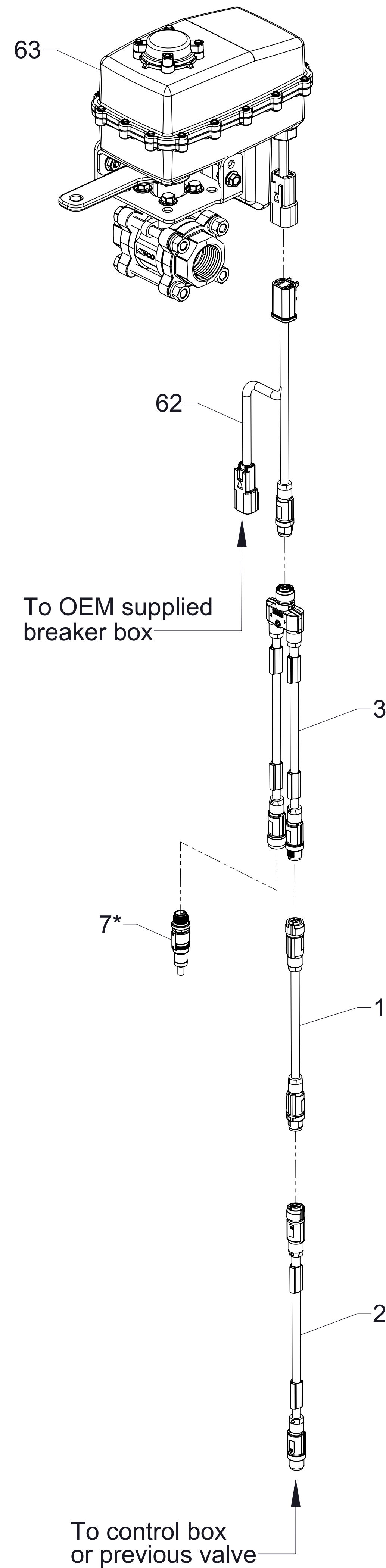
1 in Discharge Line Assembly

Ref No.	Description	Ref No.	Description
1	Violet CAN Cable, .50 Meters	55	Plain Washer, 1/4 in. SS
2	Violet CAN Cable, 2.0 Meters	56	Pipe Nipple, 2 in NPT x 4 in, SS
3	CAN Cable Splitter	57	Nylok Hex Nut, 1/4-20, SS
4	Yellow or Gray Sensor Cable, .50 Meters	58	Nylok Hex Nut, Finished, 10-32, SS
5	Yellow or Gray Sensor Cable, 3.0 Meters	59	Discharge Valve Sub-Assy, 2 in
6	Pressure Transducer, M12 x 1/4 in NPT	60	Pipe Union, 2 in
7*	CAN Termination Resistor	61	Pipe, 2 in Victaulic x 2 in NPT x 6 in, SS
46	In-Line Check Valve, 2 in	64	Valve Motor Cable
47	Node Mounting Plate	65	Paddlewheel Flowmeter
48	Manual 3-Way Ball Valve, 2 in NPT (F)	73	Pressure Transducer Cable
49	Node Controller	74	Cable Splitter
50	Magnetic Flowmeter, 2 in	112	Mounting Adapter, 2 in NPT (Includes two adapters and o-rings)
53	Mounting Clamp, 2 in	153	Valve Seal Repair Kit
54	Plain Washer, 3/16 in, SS	154	Valve Seal and Ball Repair Kit
		155	Valve Actuator Replacement Kit



2 in Discharge Line Assembly (237 GPM Flow)





Ref No.	Description
1	Violet CAN Cable, .50 Meters
2	Violet CAN Cable, 2.0 Meters
3	CAN Cable Splitter
7*	CAN Termination Resistor
62	CAN and Valve Power Cable
63	2-Position Electric Ball Valve, 1 in, SS
155	Valve Actuator Replacement Kit

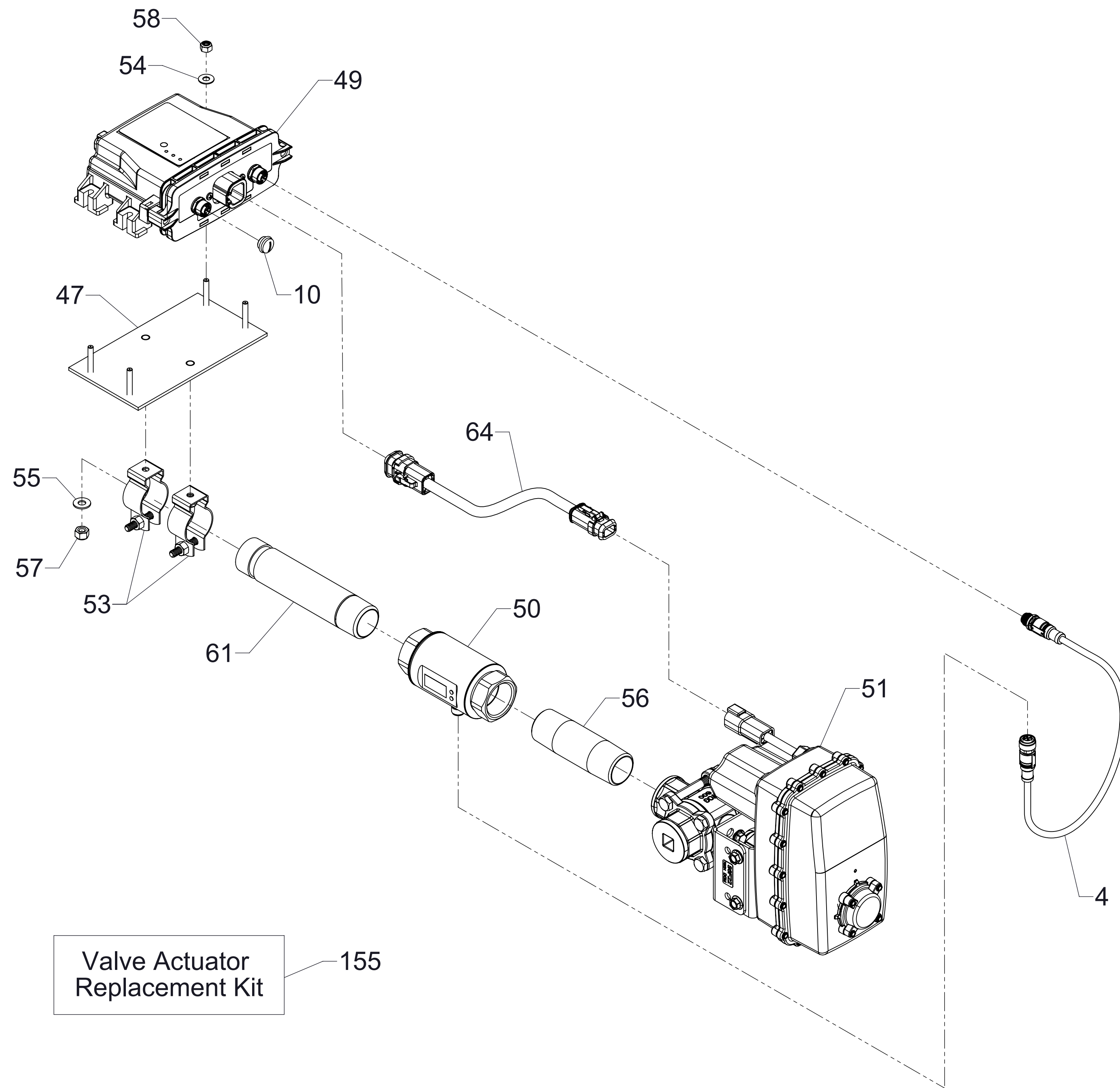
* Note that resistor installed if valve is last valve in CAN string.

Valve Actuator Replacement Kit 155

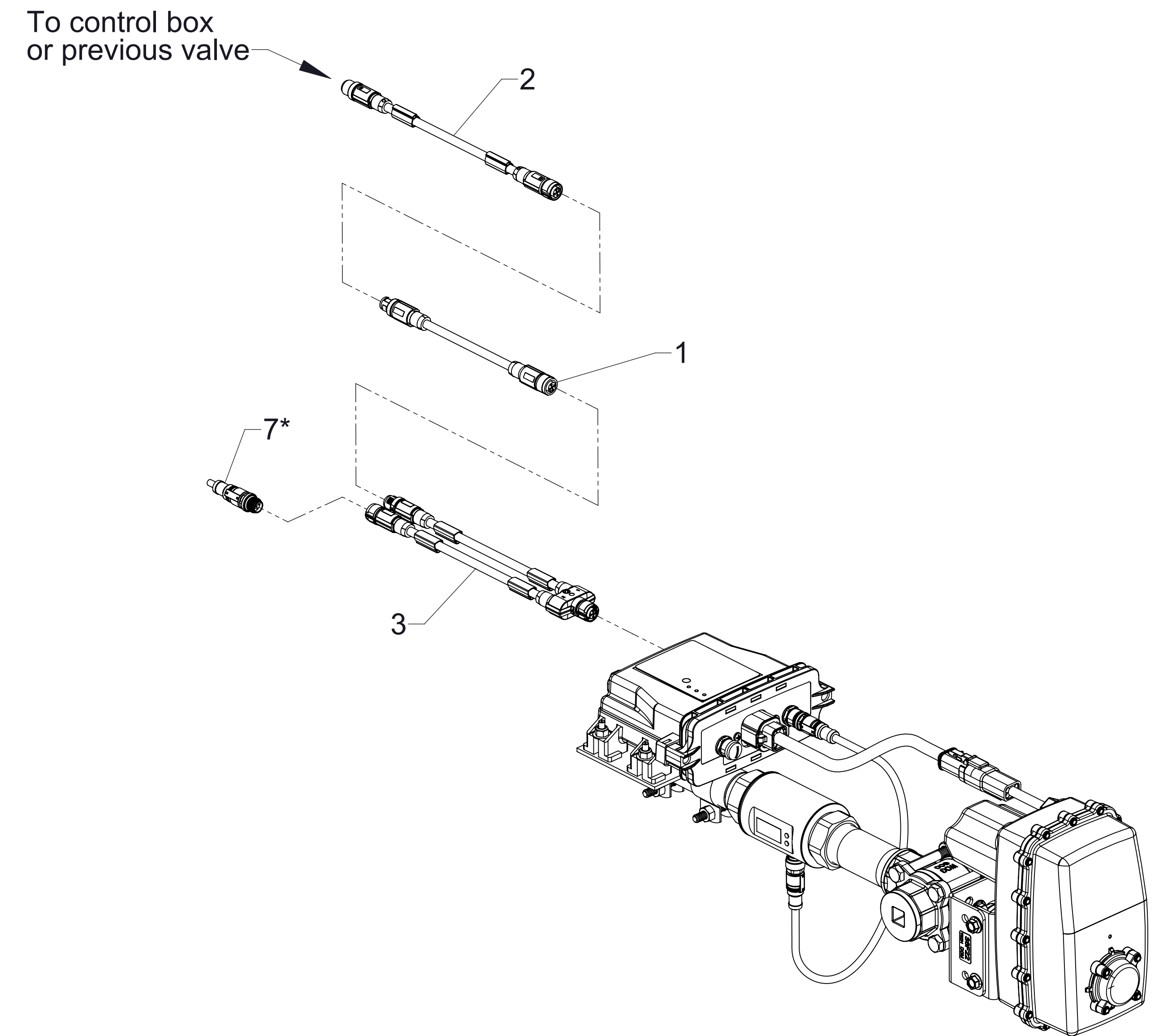
Priming Valve Assembly

Ref No.	Description
1	Violet CAN Cable, .50 Meters
2	Violet CAN Cable, 2.0 Meters
3	CAN Cable Splitter
4	Yellow or Gray Sensor Cable, .50 Meter
7*	CAN Termination Resistor
10	Sealing Cap, M12
47	Node Mounting Plate
49	Node Controller
50	Magnetic Flowmeter, 2 in

Ref No.	Description
51	Electric Ball Valve, 1 in, SS
53	Mounting Clamp, 2 in
54	Plain Washer, 3/16 in, SS
55	Plain Washer, 1/4 in, SS
56	Pipe Nipple, 1 in NPT x 4 in, SS
57	Nylok Hex Nut, 1/4-20, SS
58	Nylok Hex Nut, Finished, 10-32, SS
61	Pipe, 1 in Victaulic x 1 in NPT x 6 in, SS
64	Valve Motor Cable
155	Valve Actuator Replacement Kit



1 in Low Flow By-Pass Valve Sub-Assembly

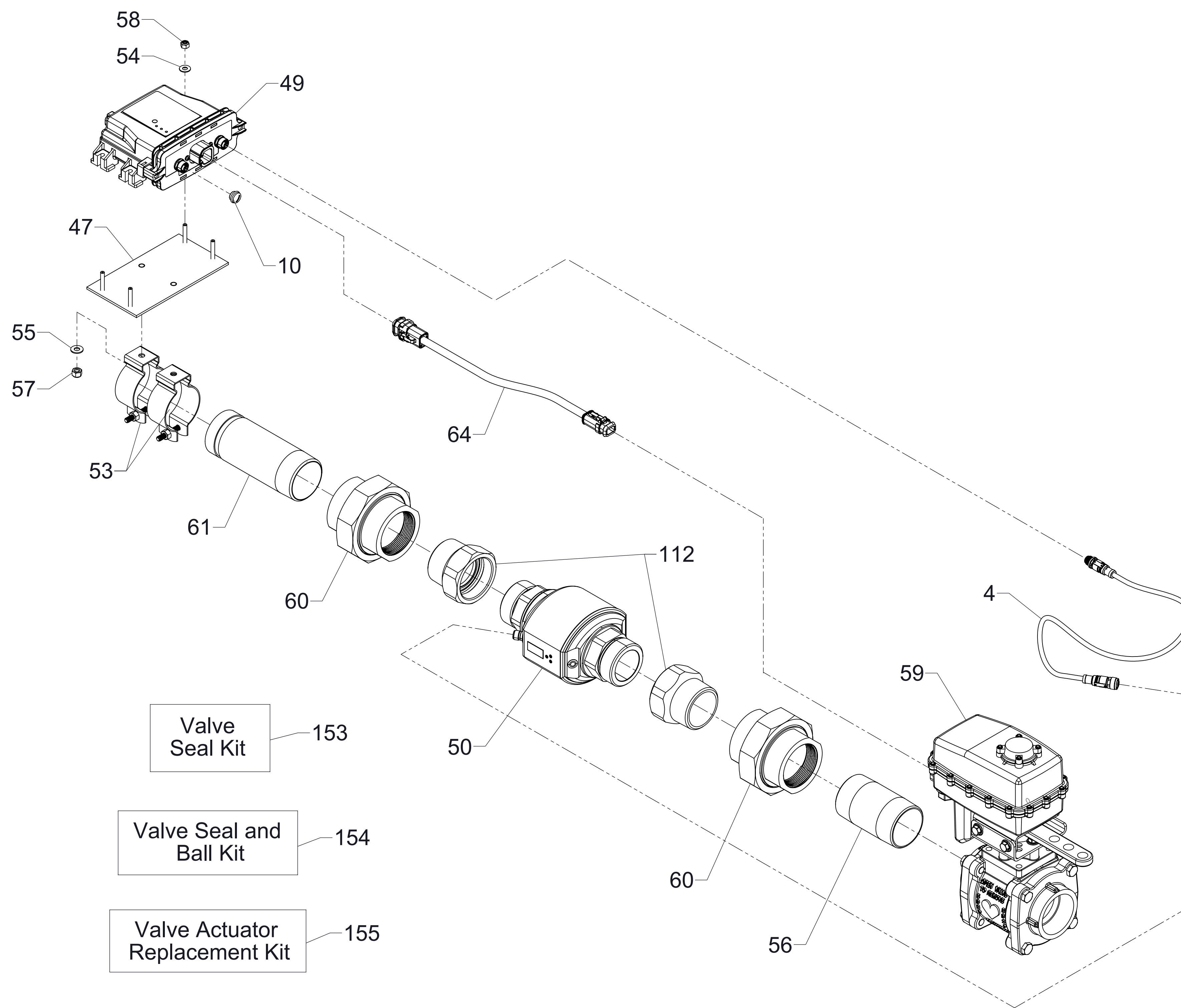
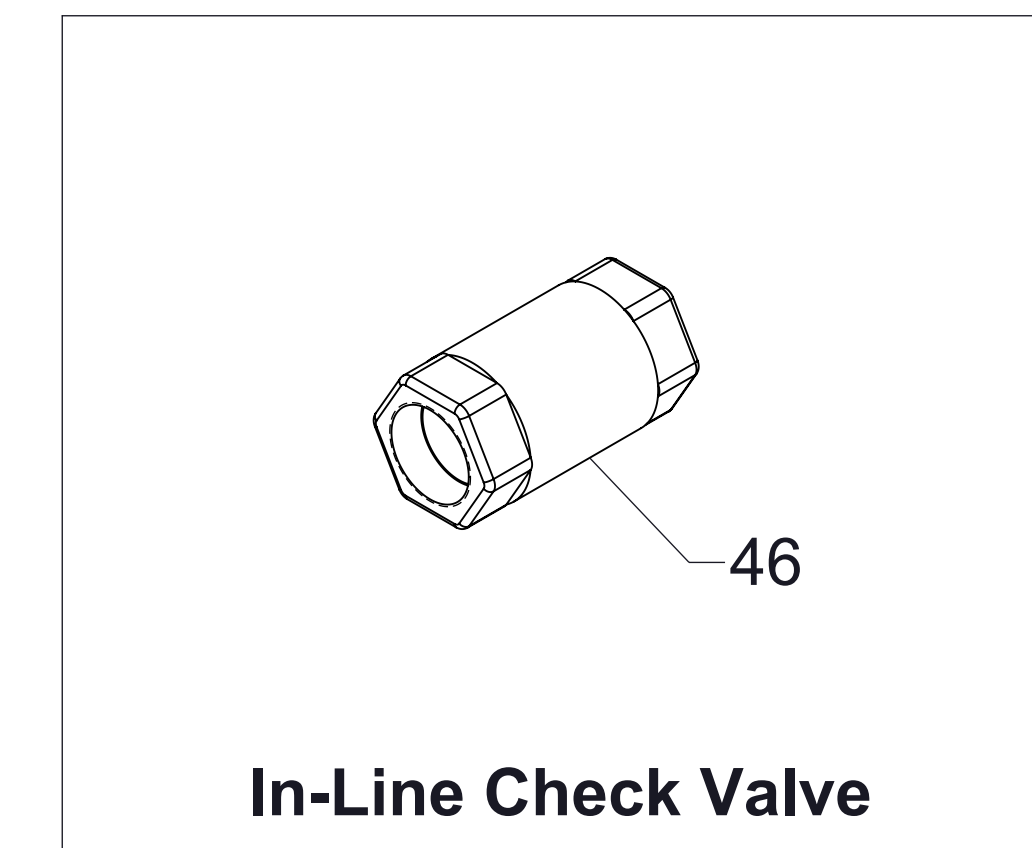


* Note that resistor installed if valve is last valve in CAN string.

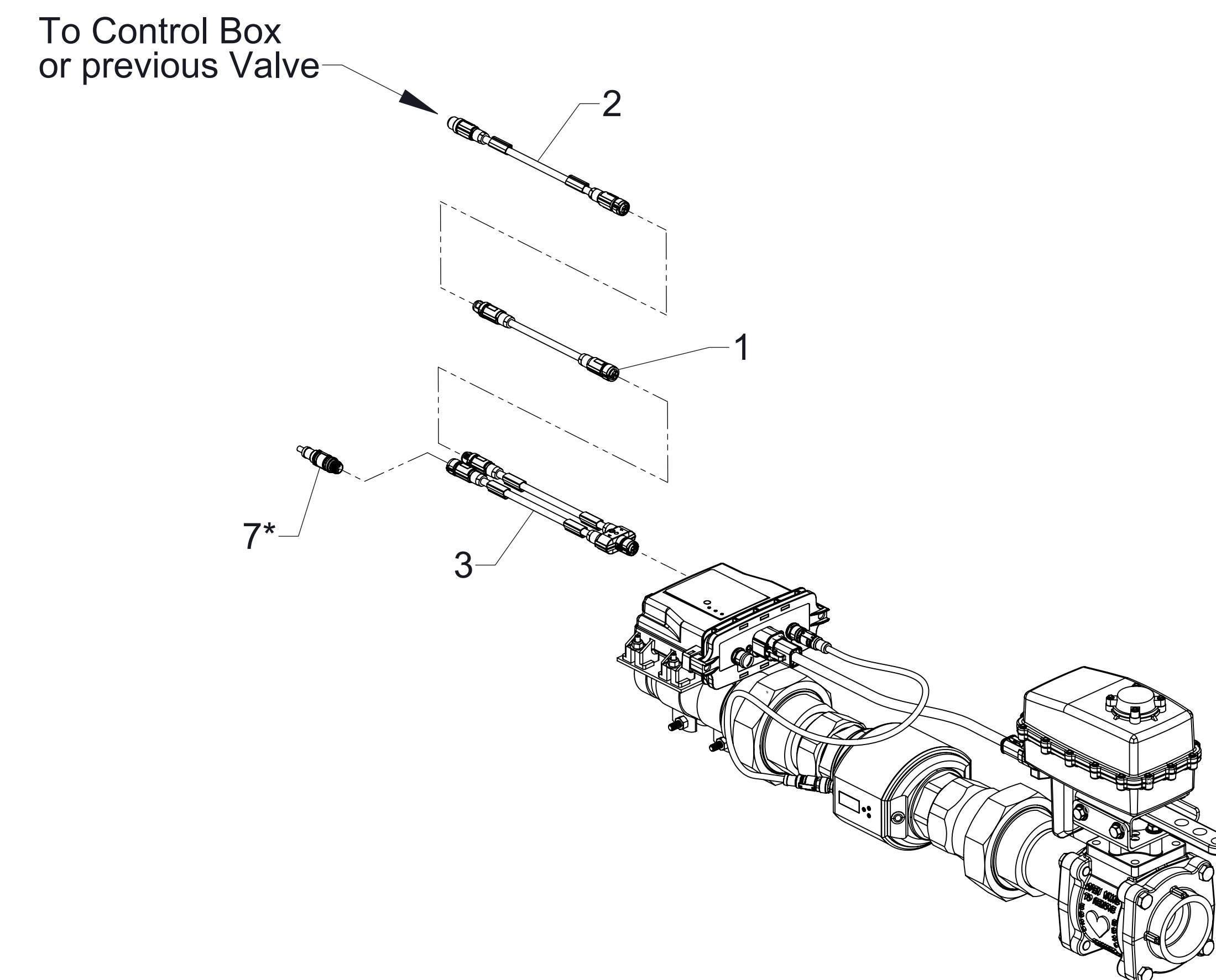
Optional Low Flow By-Pass Valve Assembly 1 in Valve

Ref No.	Description
1	Violet CAN Cable, .50 Meters
2	Violet CAN Cable, 2.0 Meters
3	CAN Cable Splitter
4	Yellow or Gray Sensor Cable, .50 Meter
7*	CAN Termination Resistor
10	Sealing Cap, M12
46	In-Line Check Valve, 2 in
47	Node Mounting Plate
49	Node Controller
50	Magnetic Flowmeter, 2 in

Ref No.	Description
53	Mounting Clamp, 2 in
54	Plain Washer, 3/16 in, SS
55	Plain Washer, 1/4 in. SS
56	Pipe Nipple, 2 in NPT x 4 in, SS
57	Nylok Hex Nut, 1/4-20, SS
58	Nylok Hex Nut, Finished, 10-32, SS
59	Discharge Valve Sub-Assy, 2 in
60	Pipe Union, 2 in
61	Pipe, 2 in Victaulic x 2 in NPT x 6 in, SS
64	Valve Motor Cable
112	Mounting Adapter, 2 in NPT (Includes (2) adapters and o-rings)
153	Valve Seal Repair Kit
154	Valve Seal and Ball Repair Kit
155	Valve Actuator Replacement Kit



Supply Tank Fill and Optional Concentrate Transfer Valve Sub-Assembly

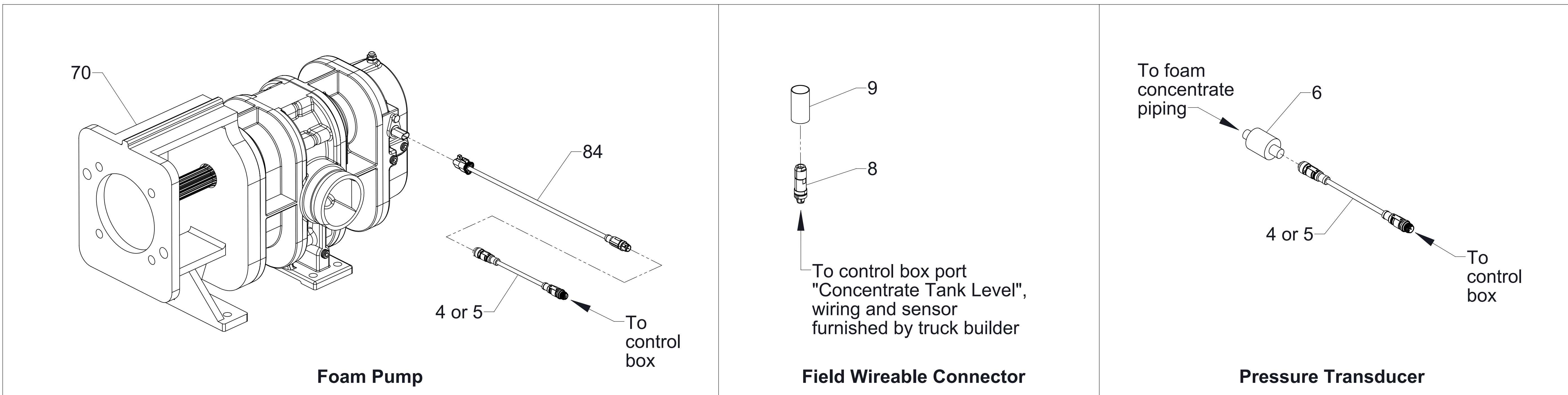
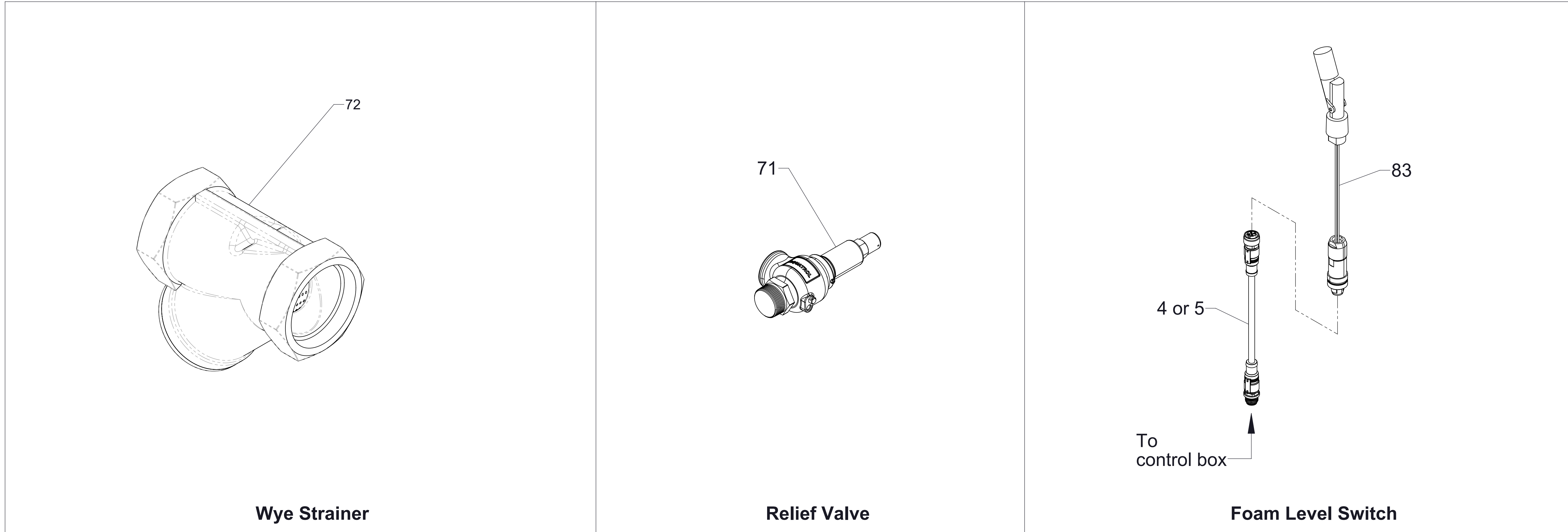


* Note that resistor installed if valve is last valve in CAN string.

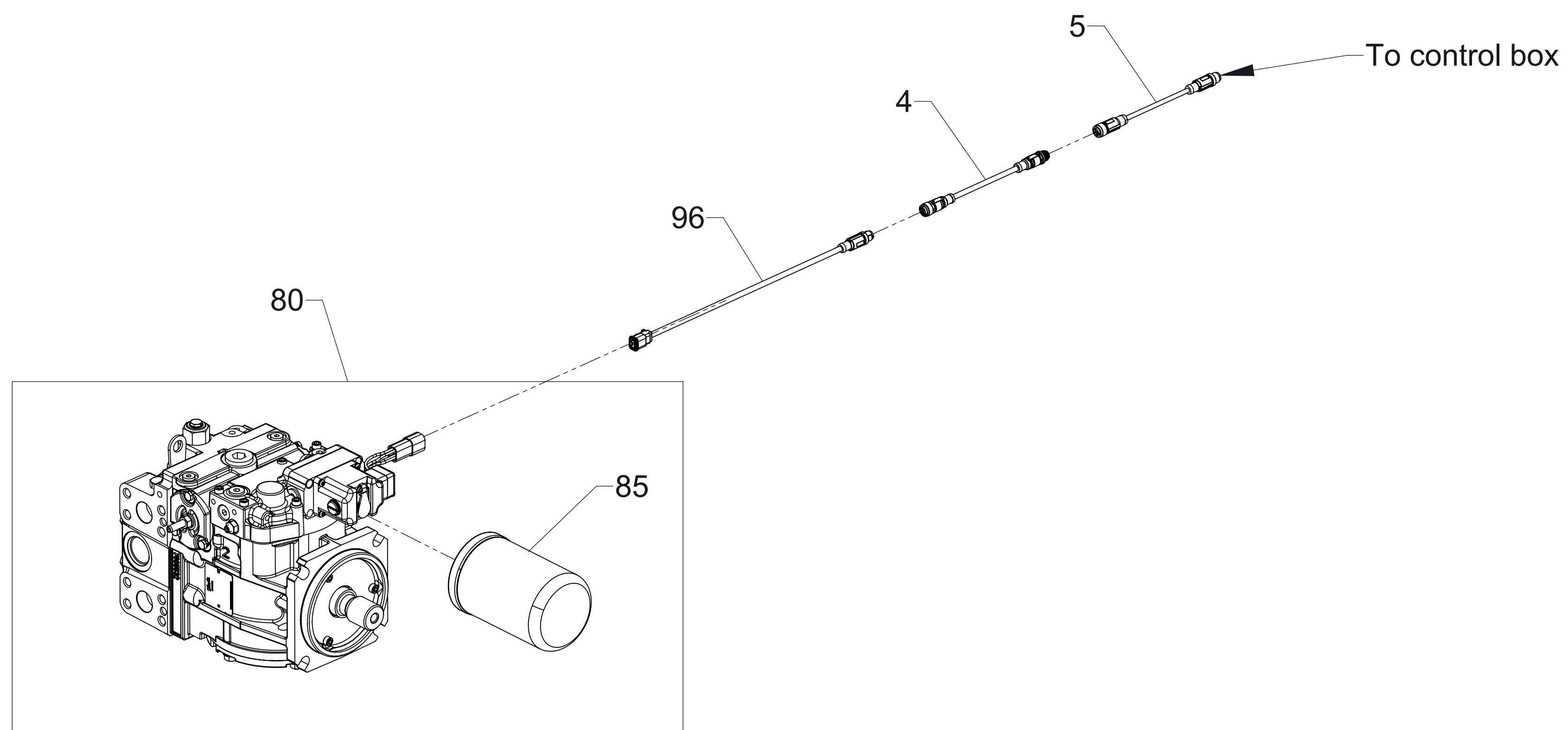
Supply Tank Fill and Optional Concentrate Transfer Valve Assembly

Ref No.	Description
4	Yellow or Gray Sensor Cable, .50 Meter
5	Yellow or Gray Sensor Cable, 3.0 Meters
6	Pressure Transducer, M12 x 1/4 in NPT
8	Field Wireable Connector, M12
9	Shrink Wrap

Ref No.	Description
70	Foam Pump
71	Relief Valve
72	Wye Strainer
83	Foam Level Switch
84	Foam Pump Cable

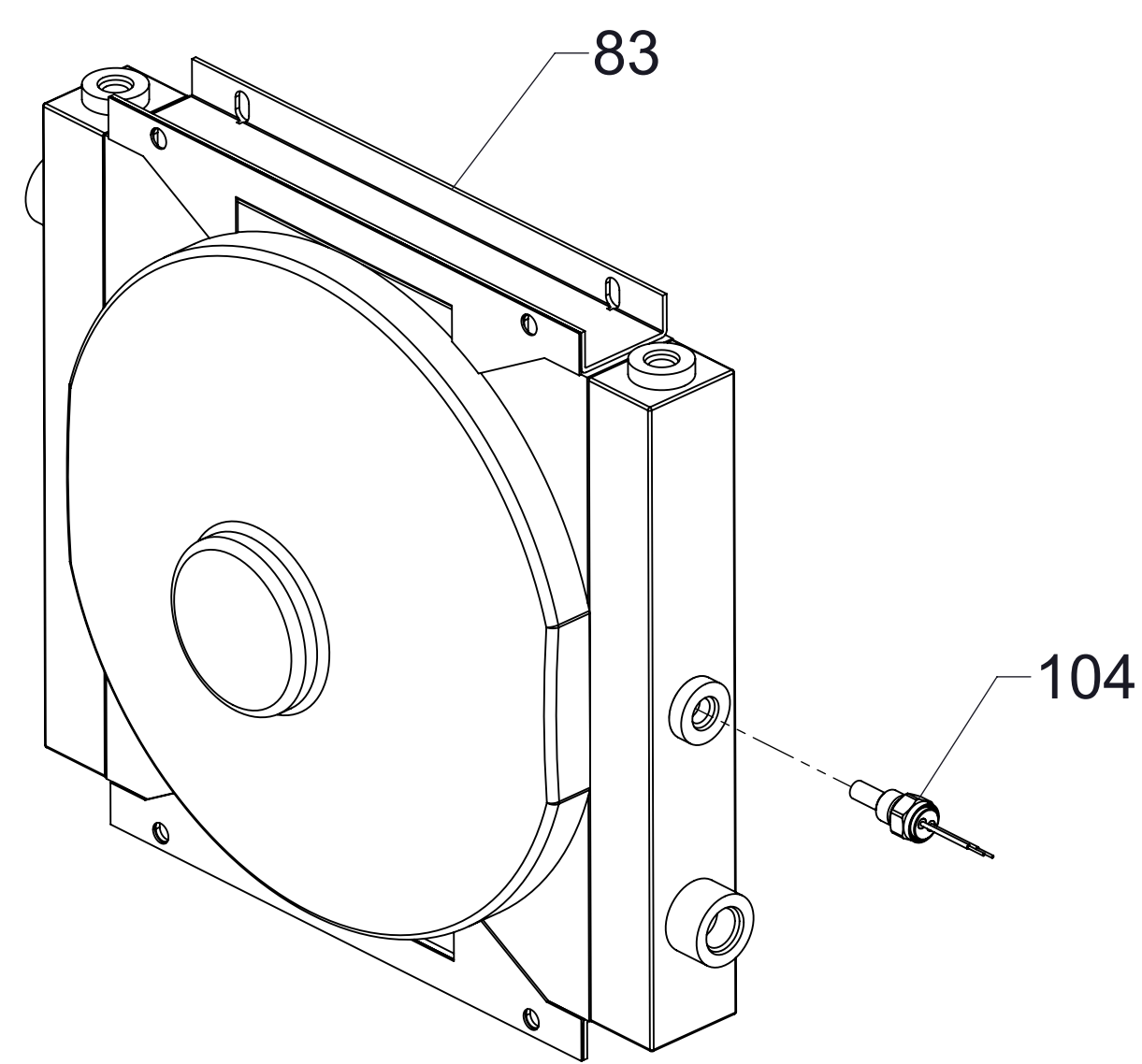


Foam Concentrate System

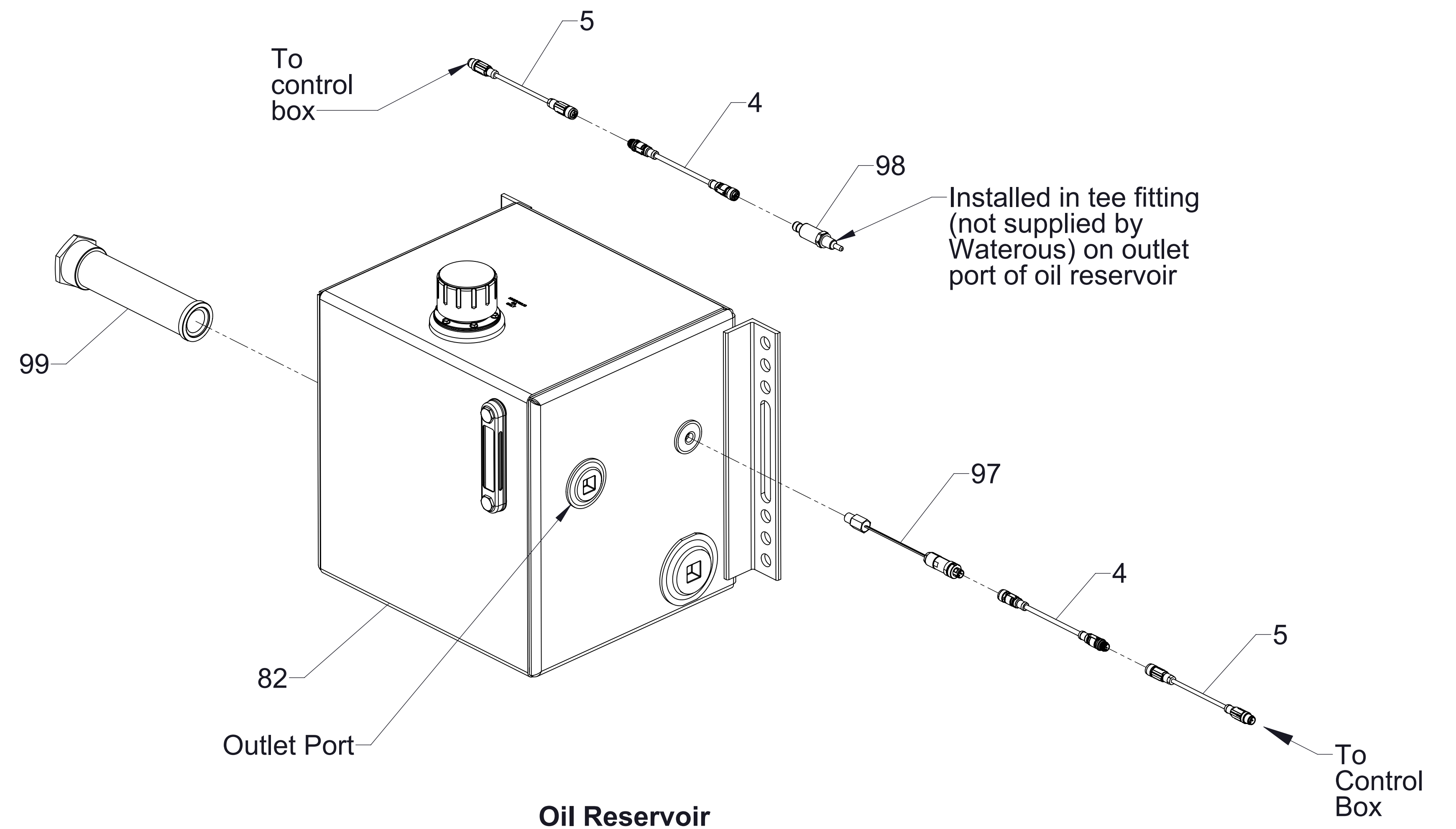


Hydraulic Pump

Ref No.	Description
4	Yellow or Gray Sensor Cable, .50 Meter
5	Yellow or Gray Sensor Cable, 3.0 Meter
80	Hydraulic Pump
82	Oil Reservoir
83	Oil Cooler
85	Hydraulic Motor Filter
96	Hydraulic Pump Cable
97	Oil Level Sensor
98	Oil Temperature Transmitter
99	Oil Strainer
104	Fan Controller Switch



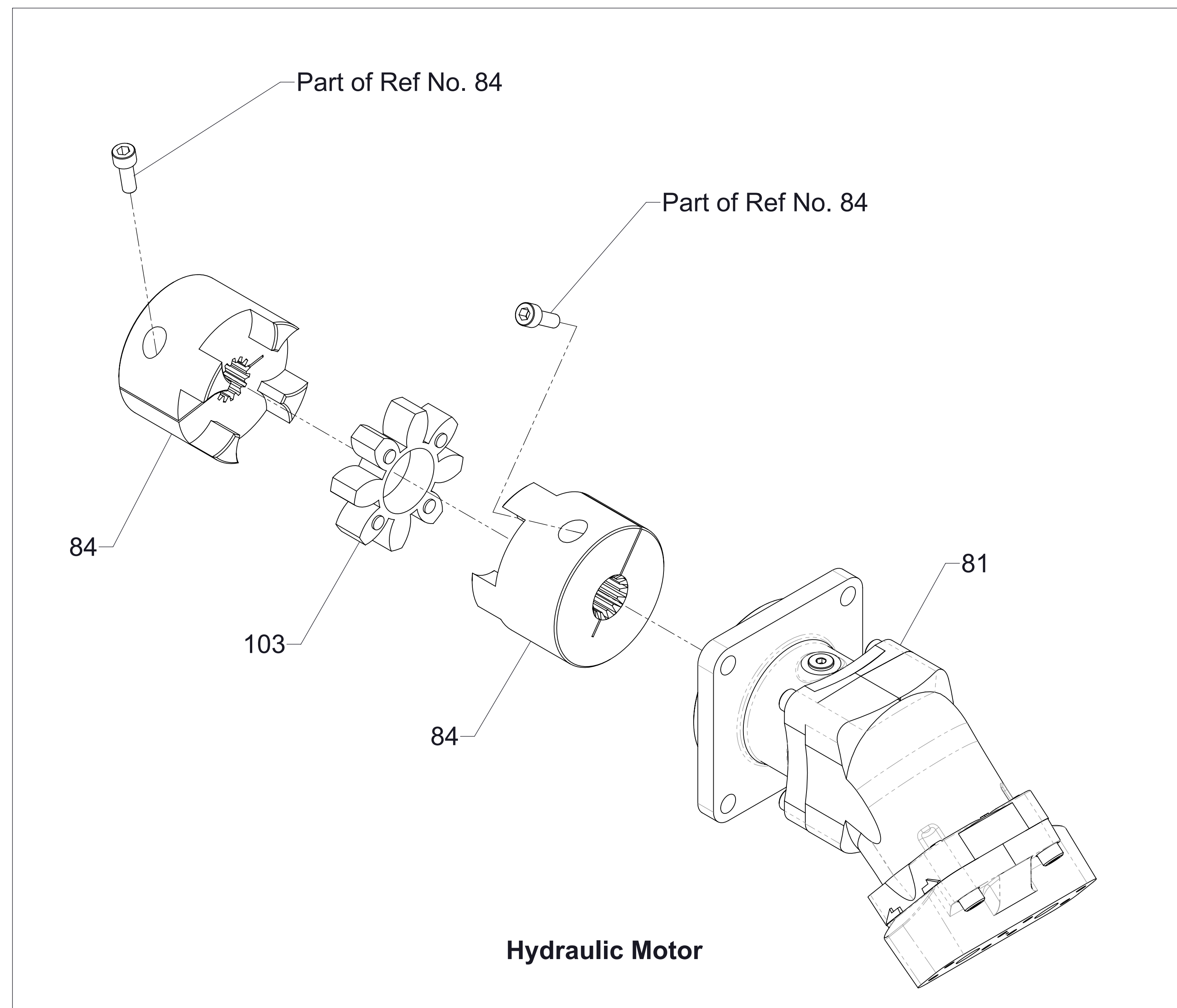
Oil Cooler



Oil Reservoir

Hydraulic System

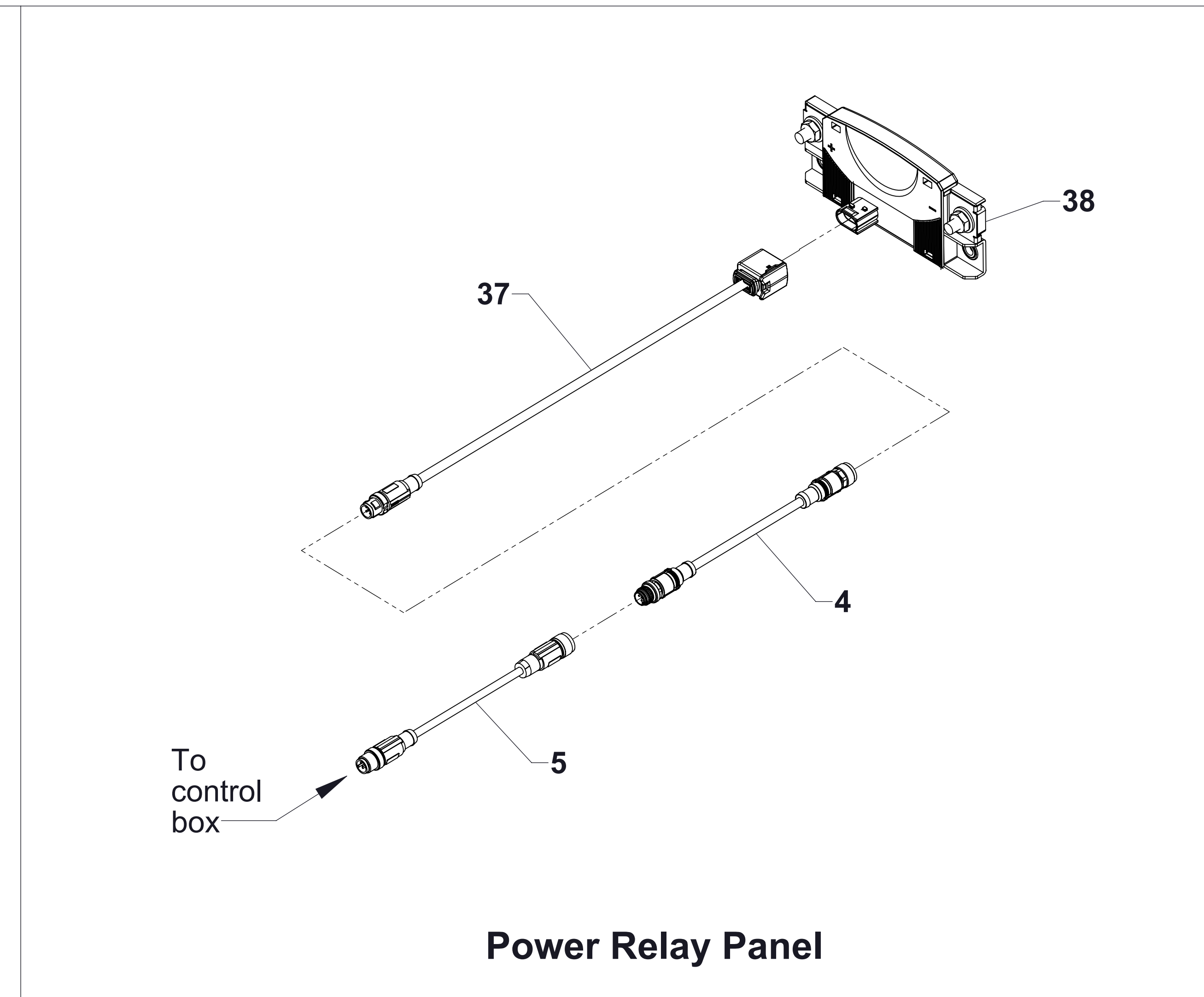
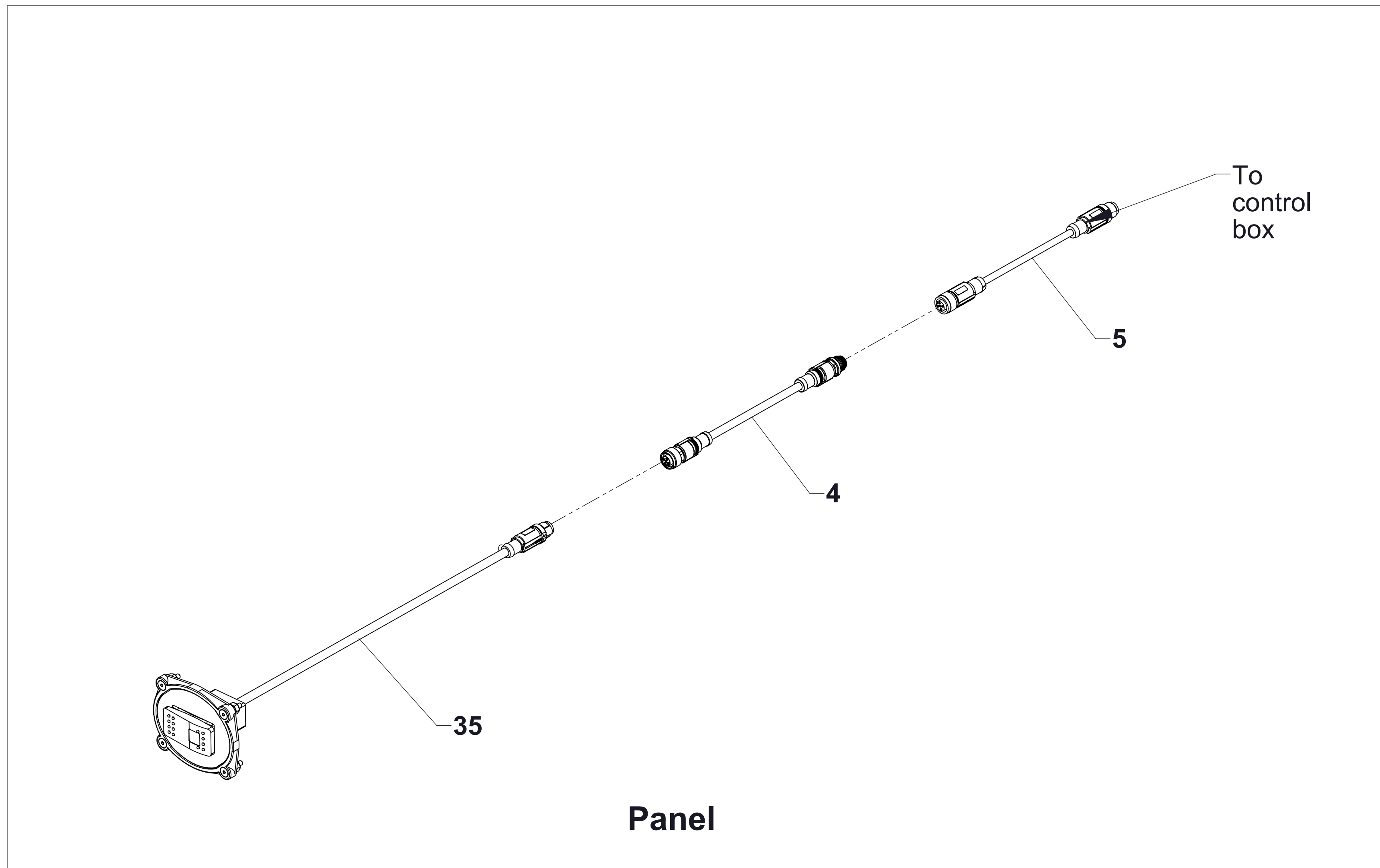
Ref No.	Description
81	Hydraulic Motor
84	Coupling Half
100	Oil Filter Head
101	Oil Filter
102	Filter Life Indicator
103	Coupling Spider



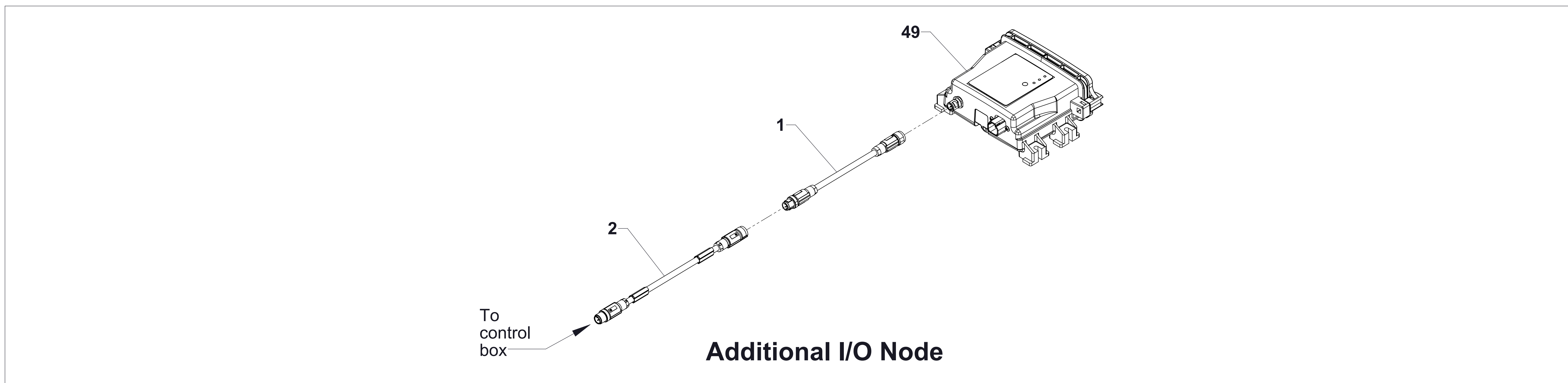
Hydraulic System
(Continued)

Ref No.	Description
1	Violet CAN Cable, .50 Meters
2	Violet CAN Cable, 2.0 Meters
4	Yellow or Gray Sensor Cable, .50 Meter
5	Yellow or Gray Sensor Cable, 3.0 Meter

Ref No.	Description
35	Manual Override Panel
37	Manual Override Power Relay Panel Cable
38	Power Relay Panel
49	Node Controller



Manual Override



**Optional Additional I/O Node
and
Optional Manual Override**