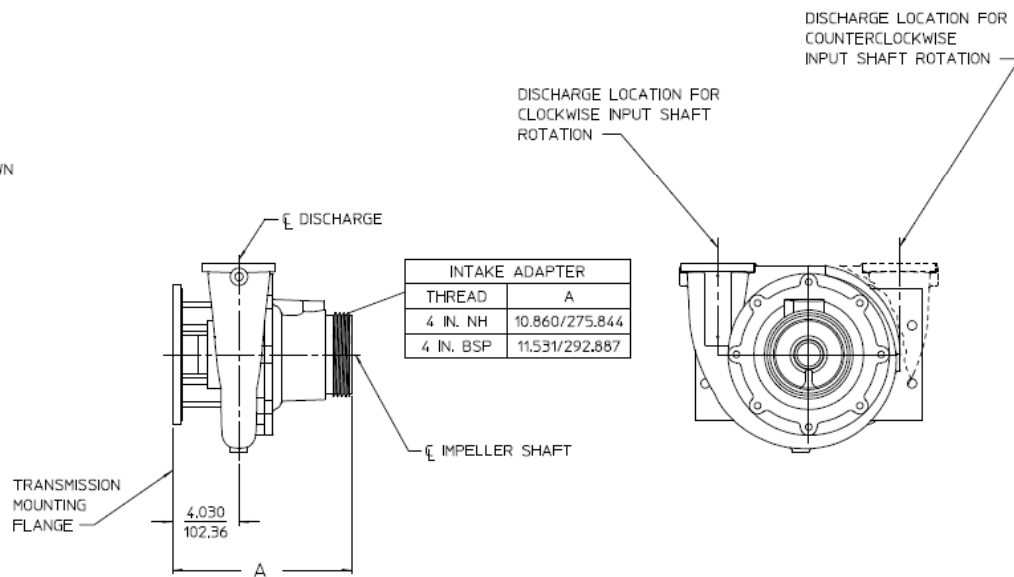
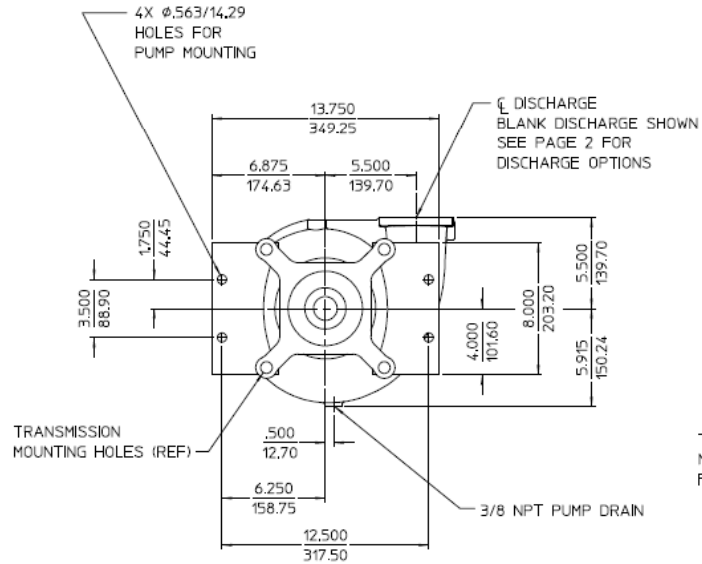
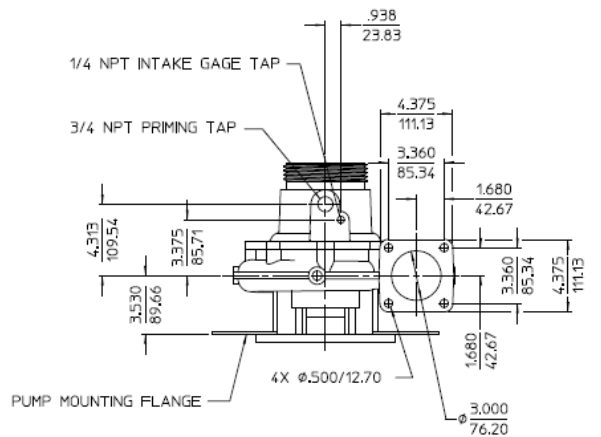


Dimensional Drawings for CLR Series Fire Pumps

Basic Pump			Drive		Pump Model	See Page					
Series	Intake		Transmission Model	Input Rotation (1)		Basic Pump Dimensions	Pump and Transmission	Optional			Ordering Info
	Type	Size			Discharge Fittings			Pump Discharge Positions	Transmission Mounting Positions		
CLR	Threaded	4 in. NH or 4 in. BSP	K Series Two Gear Increaser (No Clutch)	CW or CCW	CLRK	2	3	6	7	8	9
			T Series Two Gear Increaser Direct Engine Mount	CW or CCW	CLRT	2	4				
			PA Series PTO Driven, Chain Drive	CW	CLRPA	2	5				

Note:

1. Input rotation is viewed looking directly at the transmission input shaft.



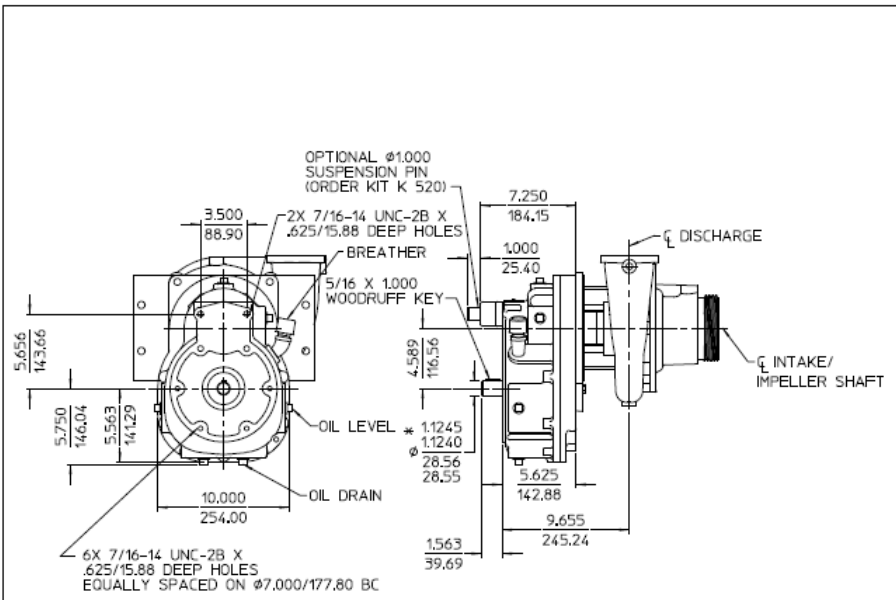
ALL DIMENSIONS SHOWN AS INCH/MILLIMETER

$\left(\frac{\text{INCH}}{\text{MILLIMETER}} \right)$

MODEL CLR, 4 INCH THREADED INTAKE ADAPTER

BASIC PUMP DIMENSIONS

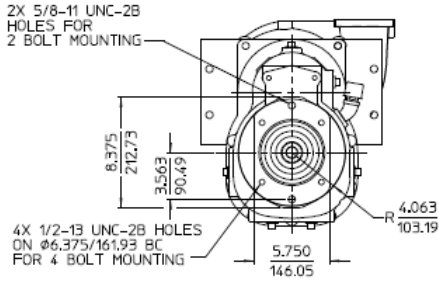
SEE PAGE 6 FOR OPTIONAL DISCHARGE
SEE PAGE 3, 4 AND 5 FOR AVAILABLE TRANSMISSIONS
SEE PAGE 7 FOR AVAILABLE DISCHARGE POSITIONS



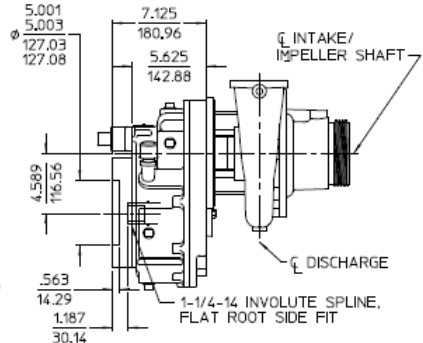
* OPTIONAL HYDRAULIC FLANGE AVAILABLE. SEE DETAIL AT RIGHT

1-1/8 INCH KEYED INPUT

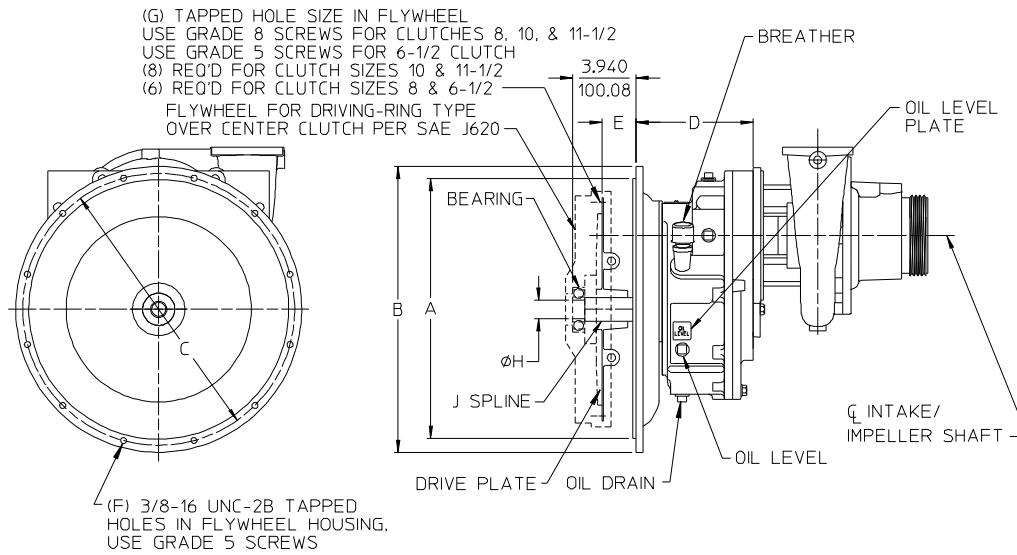
**MEDIUM DUTY K TRANSMISSION
MODEL CLRK**
(TWO GEAR WITHOUT CLUTCH)
CLOCKWISE OR COUNTERCLOCKWISE INPUT
SEE PAGE 8 FOR AVAILABLE MOUNTING POSITIONS
SEE PAGE 2 FOR BASIC PUMP DIMENSIONS



OPTIONAL SAE CLASS "C" 2 OR 4 BOLT
HYDRAULIC PUMP FLANGE INPUT



ALL DIMENSIONS SHOWN AS INCH/MILLIMETER
(INCH / MILLIMETER)



ALL DIMENSIONS SHOWN AS INCH/MILLIMETER

($\frac{\text{INCH}}{\text{MILLIMETER}}$)

SAE BELLHOUSING					D	SAE FLYWHEEL			DRIVE PLATE		DRIVE SHAFT	
SIZE	A	B	C	F		CLUTCH NUMBER	E	G	PART NUMBER	TORQUE RATING	H	J
3	16.125/409.58	17.750/450.85	16.875/428.63	12	7.250/184.15	10	2.12/53.85	3/8-16	V 2272	850 FT-LB	Ø 1.1805/1.1800 29.98/29.97	1-1/2-10 SAE
4	14.250/361.95	15.875/403.23	15.000/381.00						V 2461	425 FT-LB		
3	16.125/409.58	17.750/450.85	16.875/428.63			11-1/2	1.56/39.62		V 2852	N/A		
4	14.250/361.95	15.875/403.23	15.000/381.00			8	2.44/61.97		V 2865	N/A		
5	12.375/314.33	14.000/355.60	13.125/333.38	8	6.250/158.75	6-1/2	1.19/30.23	5/16-18	V 2865	N/A	Ø .7868/.7858 19.98/19.96	1-15T INVOLUTE

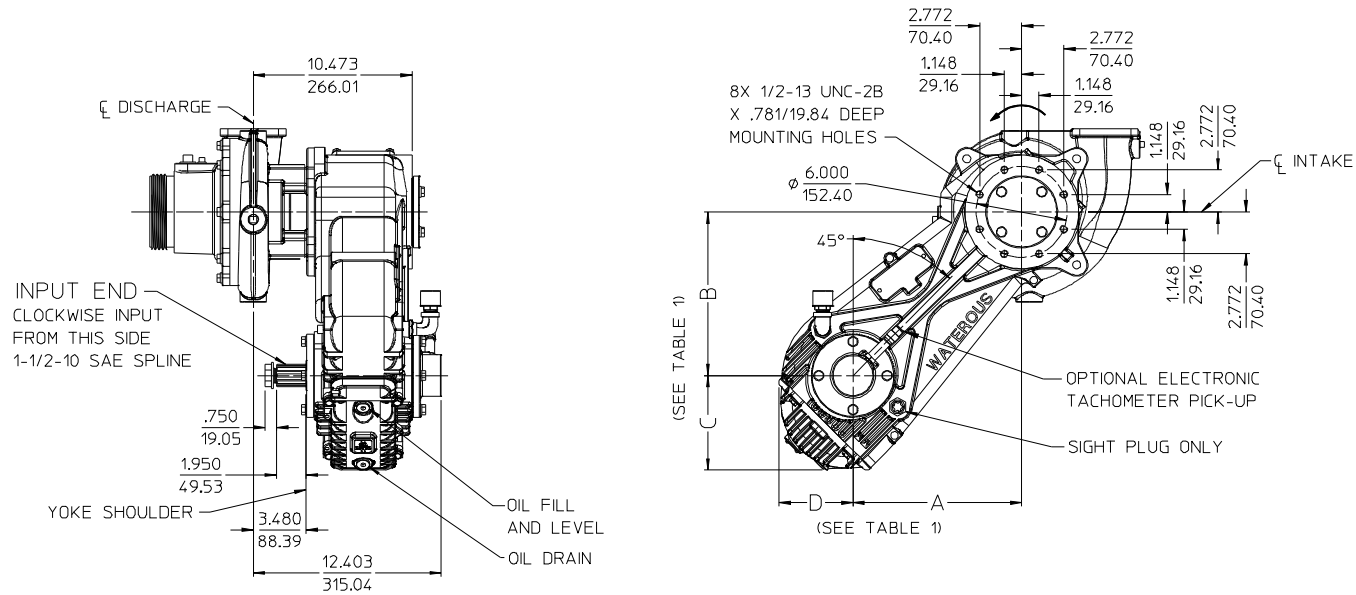
MEDIUM DUTY T TRANSMISSION
MODEL CLRT

(TWO GEAR WITHOUT CLUTCH)
 CLOCKWISE OR COUNTERCLOCKWISE INPUT
 SEE PAGE 8 FOR AVAILABLE MOUNTING POSITIONS
 SEE PAGE 2 FOR BASIC PUMP DIMENSIONS

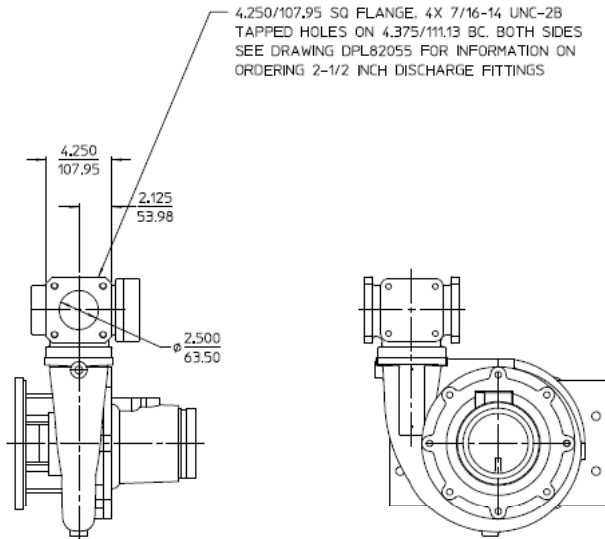
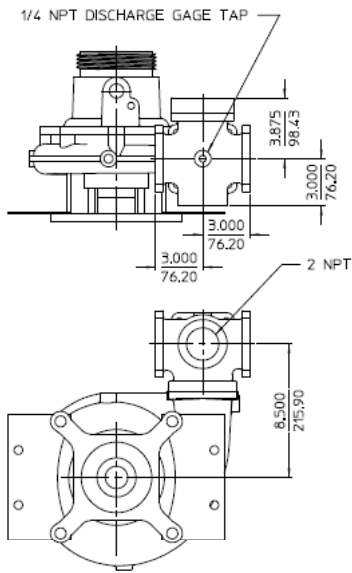
TABLE 1 - AVAILABLE AS FOLLOWS							
DRIVE LINE		RATIO	DIM A	DIM B	DIM C	DIM D	MODEL
SIZE	SPLINE						
1-1/2 INCH	1-1/2-10 SAE	1.70	11.288/286.71	10.943/277.94	6.111/155.22	4.737/120.32	CLRPA
		1.90	11.269/286.24	10.924/277.47	6.130/155.70	4.755/120.79	
		2.10	11.239/285.46	10.894/276.70	6.160/156.46	4.786/121.56	

ALL DIMENSIONS SHOWN AS INCH/MILLIMETER

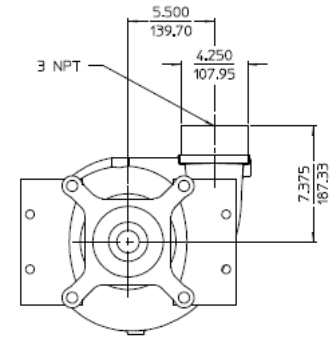
($\frac{\text{INCH}}{\text{MILLIMETER}}$)



**PA SERIES TRANSMISSION
MODEL CLRPA**

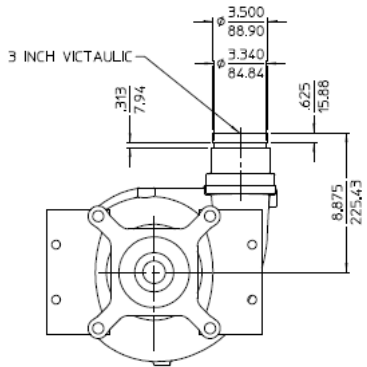


4.250/107.95 SQ FLANGE, 4X 7/16-14 UNC-2B
TAPPED HOLES ON 4.375/111.13 BC, BOTH SIDES
SEE DRAWING DPL82055 FOR INFORMATION ON
ORDERING 2-1/2 INCH DISCHARGE FITTINGS



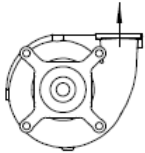
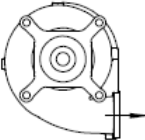
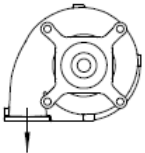
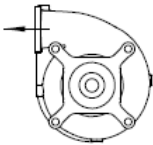
OPTIONAL 3 INCH NPT
TAPPED FLANGE
ON DISCHARGE

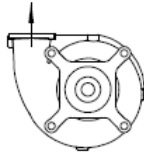
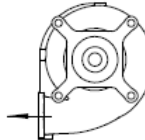
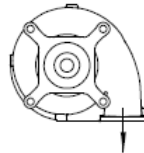
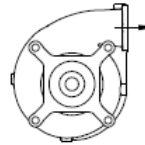
OPTIONAL PUMP DISCHARGE HEAD



OPTIONAL 3 INCH
VICTAULIC FLANGE
ON DISCHARGE

ALL DIMENSIONS SHOWN
AS INCH/MILLIMETER
(INCH / MILLIMETER)

DISCHARGE POSITION		AVAILABLE WITH TRANSMISSION SERIES			
		K	PA		T
			VERTICAL	LEFT SIDE	
FIGURE 1 (UP)		YES	YES	YES	YES
FIGURE 2 (RIGHT)		YES	YES	NO	YES
FIGURE 3 (DOWN)		YES	YES	NO	YES
FIGURE 4 (LEFT)		YES	YES	NO	YES
CLOCKWISE (CW) INPUT ROTATION					

DISCHARGE POSITION		AVAILABLE WITH TRANSMISSION SERIES	
		K	T
		FIGURE 5 (UP)	
FIGURE 6 (LEFT)		YES	YES
FIGURE 7 (DOWN)		YES	YES
FIGURE 8 (RIGHT)		YES	YES
COUNTERCLOCKWISE (CCW) INPUT ROTATION			

AVAILABLE PUMP DISCHARGE POSITIONS
(AS VIEWED FROM TRANSMISSION END OF PUMP)

TRANS SERIES	AVAILABLE MOUNTING POSITIONS			
	V-VERTICAL	L-LEFT SIDE	R-RIGHT SIDE	U-INVERTED
K				
T		NOT AVAILABLE	NOT AVAILABLE	
PA			NOT AVAILABLE	NOT AVAILABLE

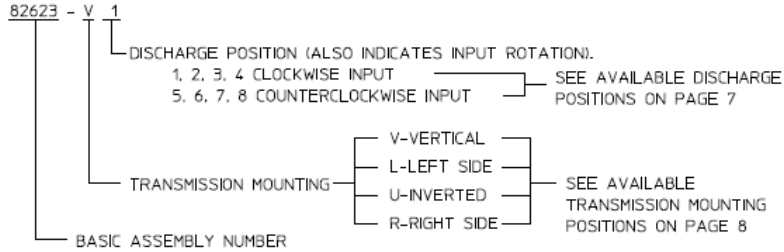
AVAILABLE TRANSMISSION MOUNTING POSITIONS

(AS VIEWED FROM TRANSMISSION INPUT SHAFT)

ORDERING INFORMATION:

WHEN ORDERING SUPPLY THE FOLLOWING

1. COMPLETE PUMP / TRANSMISSION MODEL:
CLRK OR CLRT
2. THREAD TYPE 4 IN. NH OR 4 IN. BSP
3. BASIC ASSEMBLY NUMBER 82623.
4. SUFFIX LETTERS WHICH INDICATE TRANSMISSION MOUNTING POSITION AND DISCHARGE POSITION.

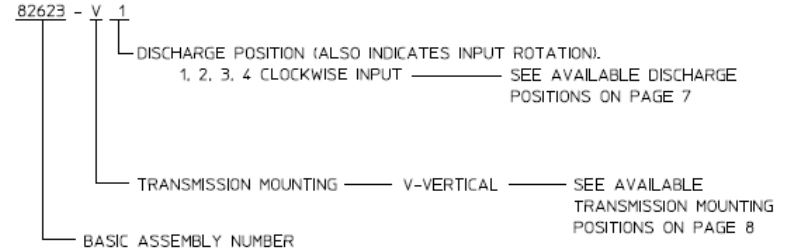


CLRK OR CLRT PUMP MODELS

ORDERING INFORMATION:

WHEN ORDERING SUPPLY THE FOLLOWING

1. COMPLETE PUMP / TRANSMISSION MODEL:
CLRPA
2. THREAD TYPE 4 IN. NH OR 4 IN. BSP
3. BASIC ASSEMBLY NUMBER 82623.
4. SUFFIX LETTERS WHICH INDICATE TRANSMISSION MOUNTING POSITION AND DISCHARGE POSITION.



CLRPA PUMP MODELS

ORDERING INFORMATION