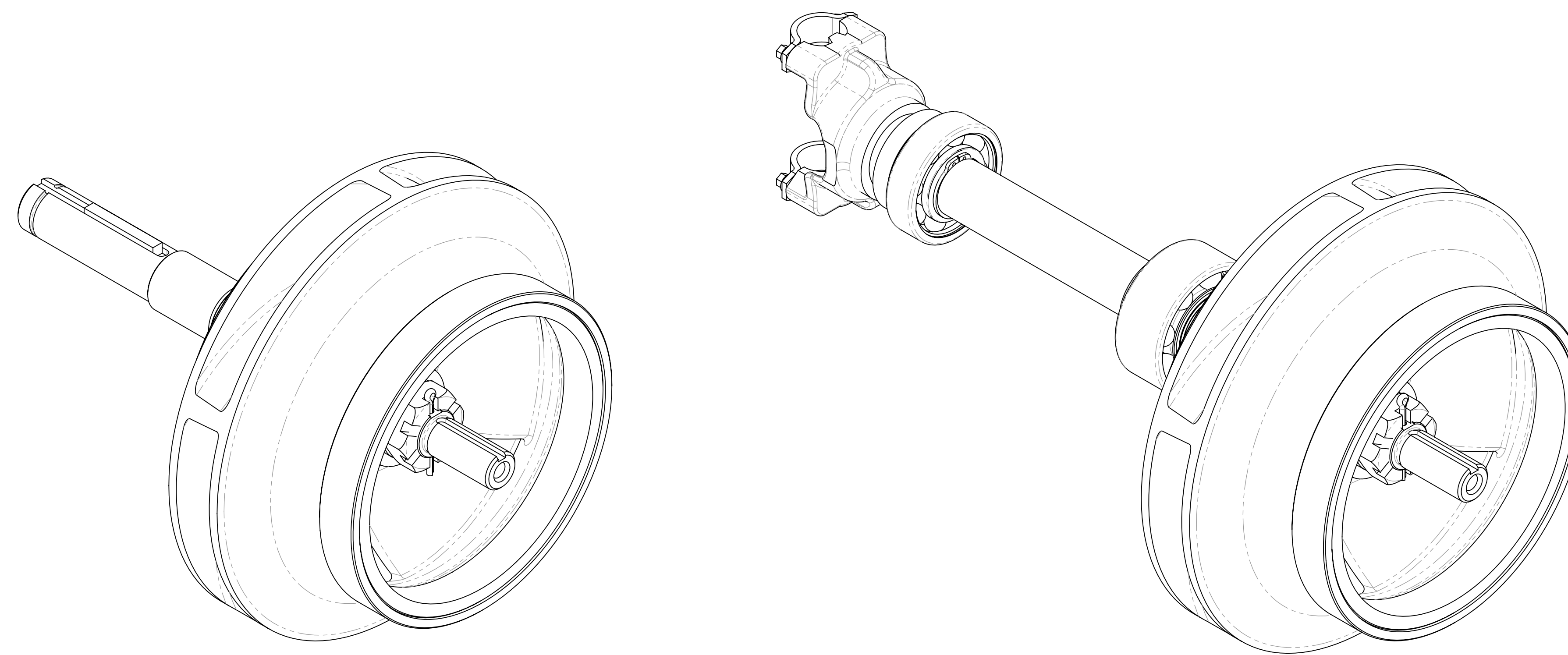
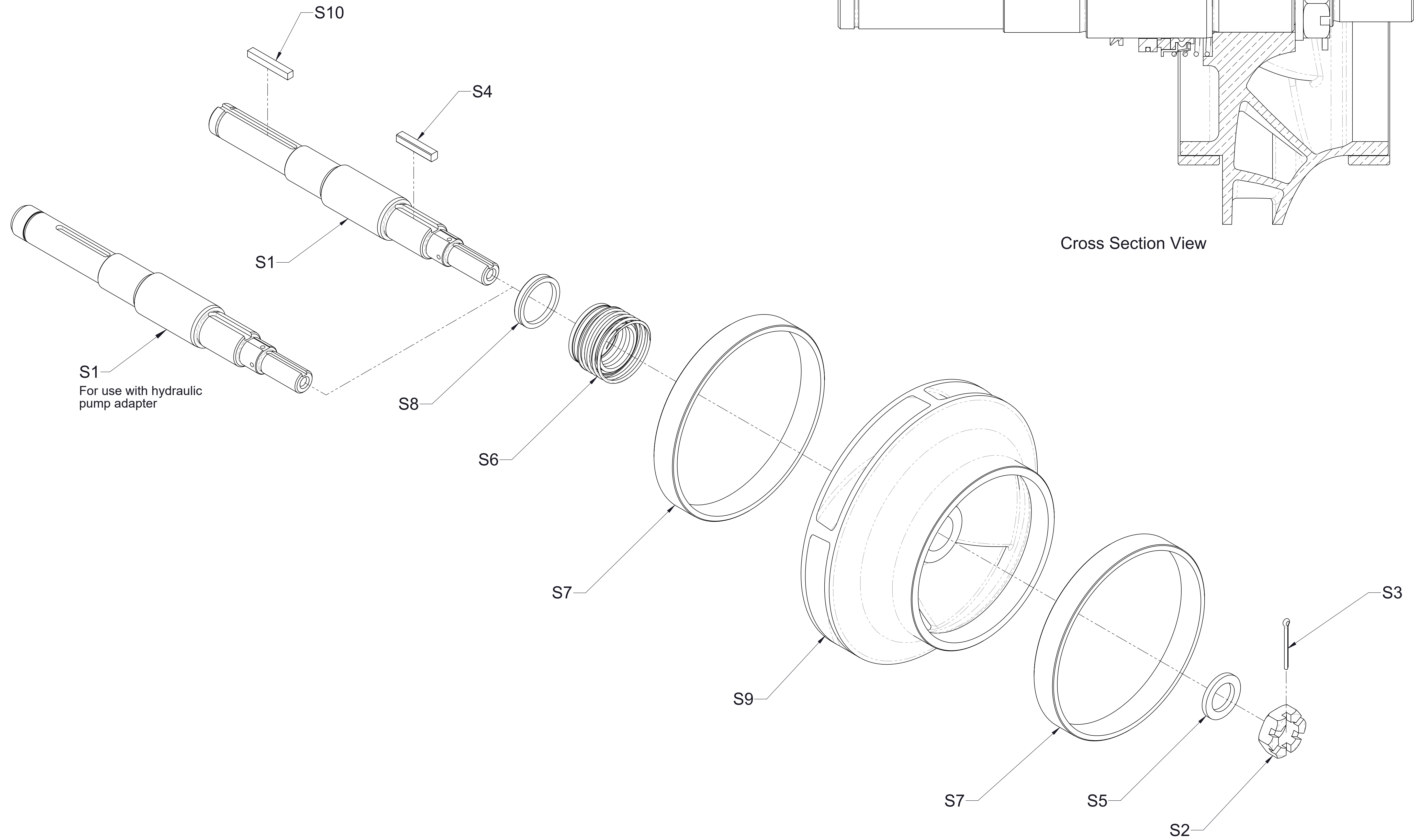


ESU1 Impeller Shaft Assembly Service Parts List

Description	See Sheet
Impeller Shaft Assembly - ESU1C22	2
Impeller Shaft Assembly - ESU1D	3
Inducer Assembly	4

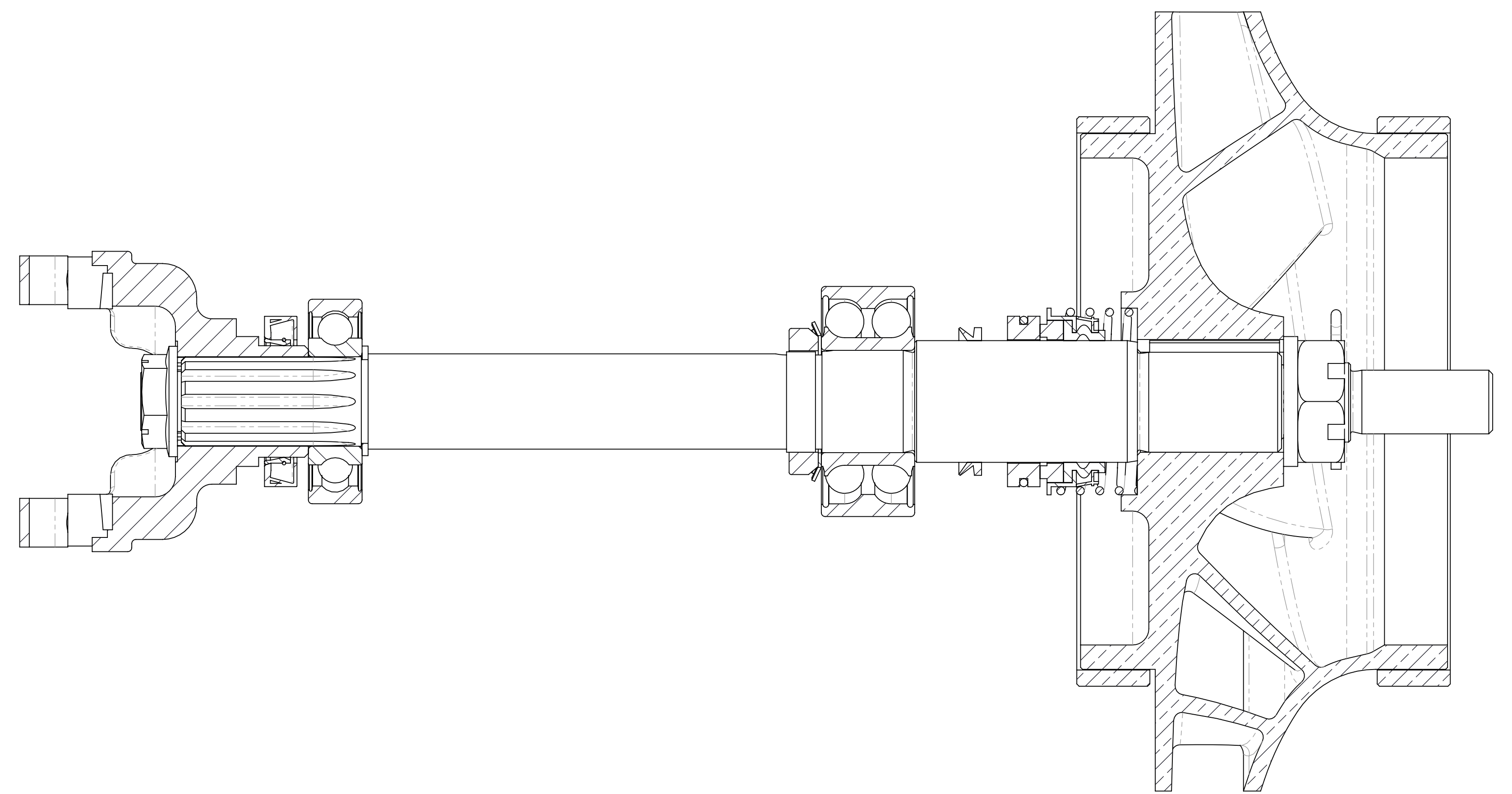


Ref No.	Description
S1	Shaft-Impeller, Inducer
S2	Nut-Impeller
S3	Pin-Cotter, 5/32 x 2 in
S4	Key-Square, Chamfered, 3/8 x 2 in
S5	Washer
S6	Seal-Mechanical
S7	Ring-Wear
S8	V-Ring, Flinger
S9	Impeller
S10	Key-Square, 5/16 x 2-5/16 in

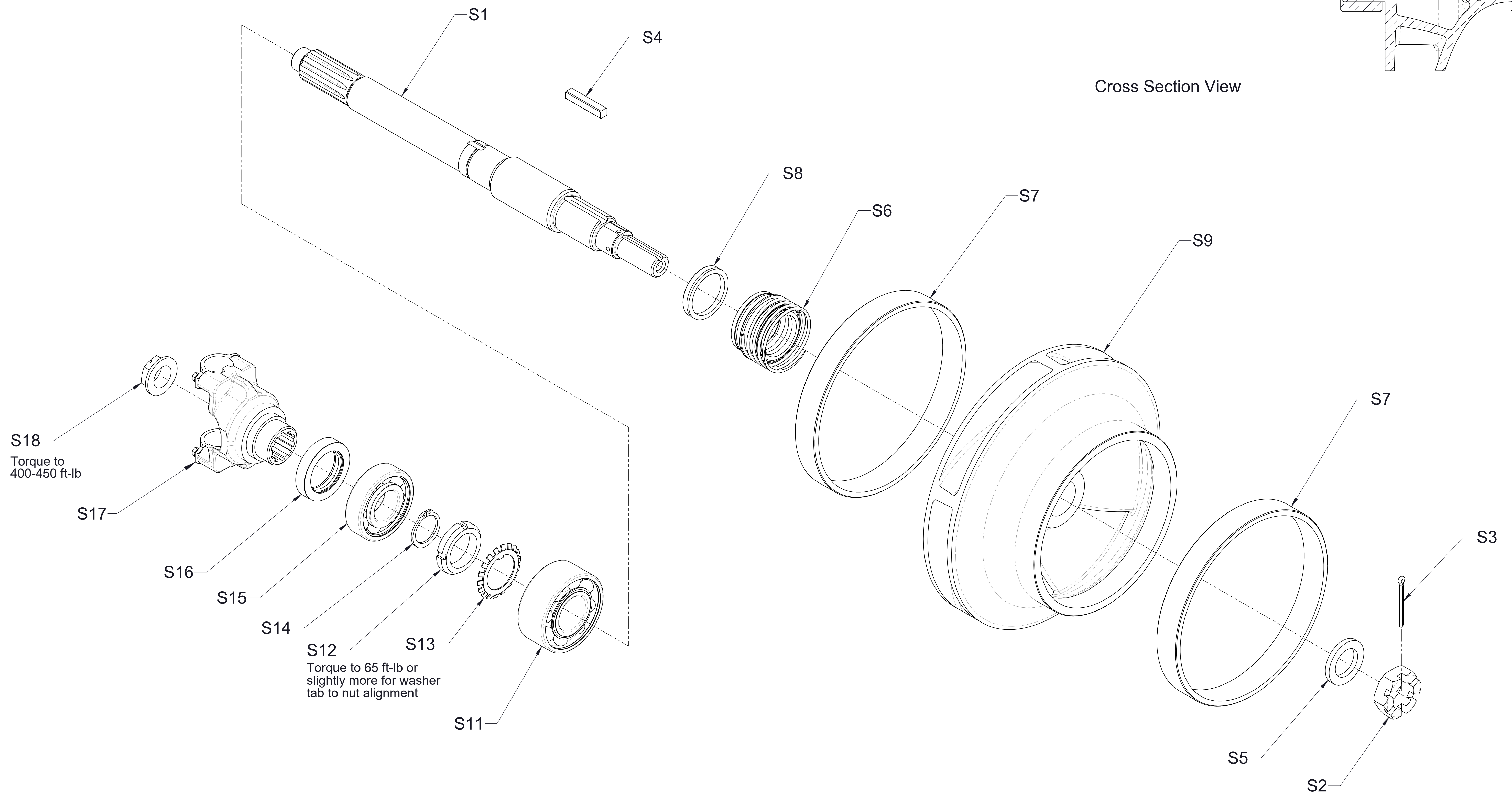


ESU1C22 Impeller Shaft Assembly
(CW impeller rotation shown)

Ref No.	Description
S1	Shaft-Impeller, Inducer
S2	Nut-Impeller
S3	Pin-Cotter, 5/32 x 2 in
S4	Key-Square, Chamfered, 3/8 x 2 in
S5	Washer
S6	Seal-Mechanical
S7	Ring-Wear
S8	V-Ring, Flinger
S9	Impeller
S11	Bearing, Ball, Double Row, 40° Angular Contact, 40 x 90 x 36.5 mm
S12	Nut-Lock, Bearing, N08
S13	Washer-Lock, Bearing, W08
S14	Ring-Retaining, External, 1-3/8 in Shaft Dia
S15	Bearing, Ball, Single Row, 35 x 80 x 21 mm
S16	Seal-Oil, 1-23/32 x 2-5/8 in
S17	Yoke-End
S18	Nut-Self Locking, 1-20 UNEF-2B

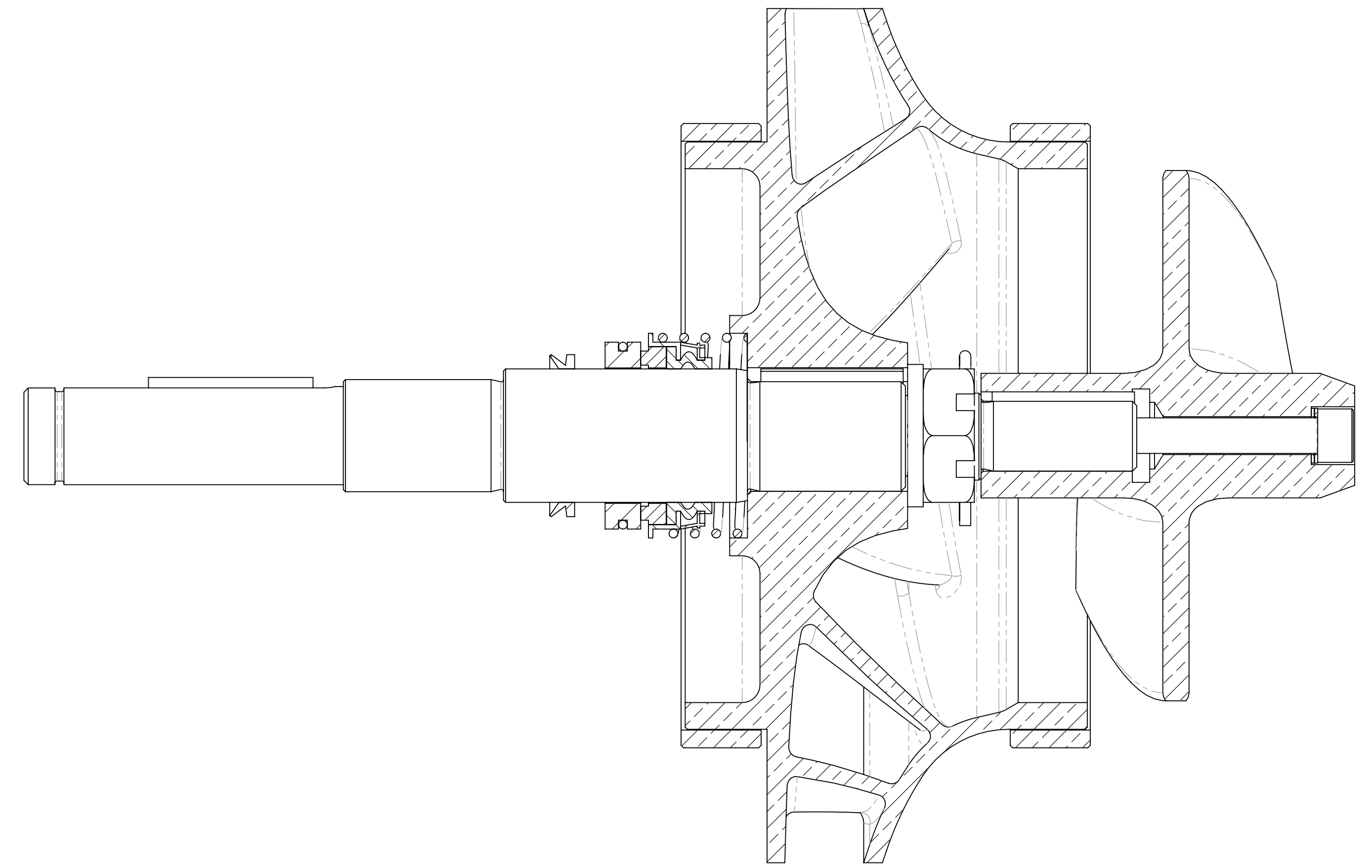


Cross Section View

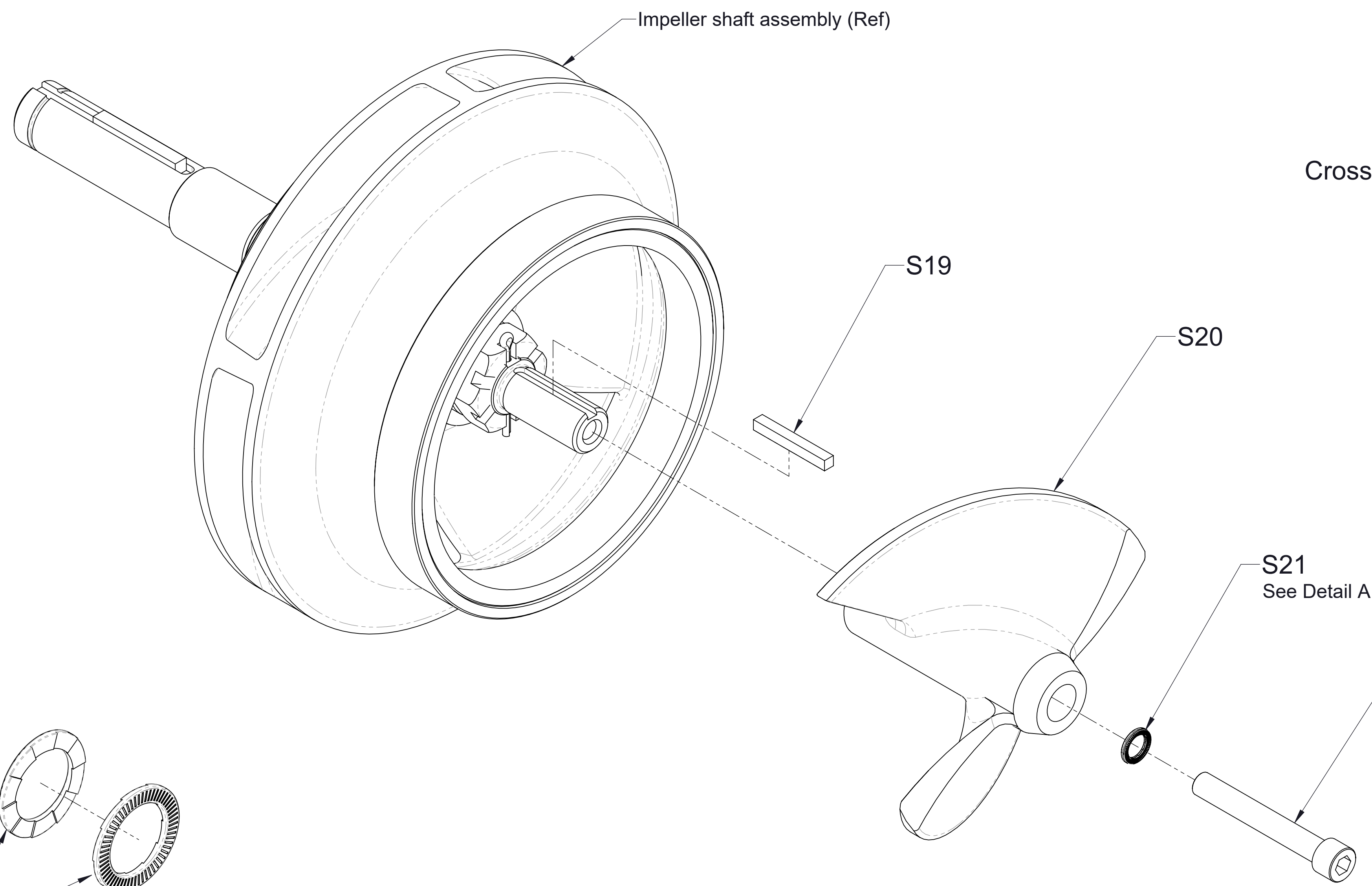


ESU1D Impeller Shaft Assembly
(CW impeller rotation shown)

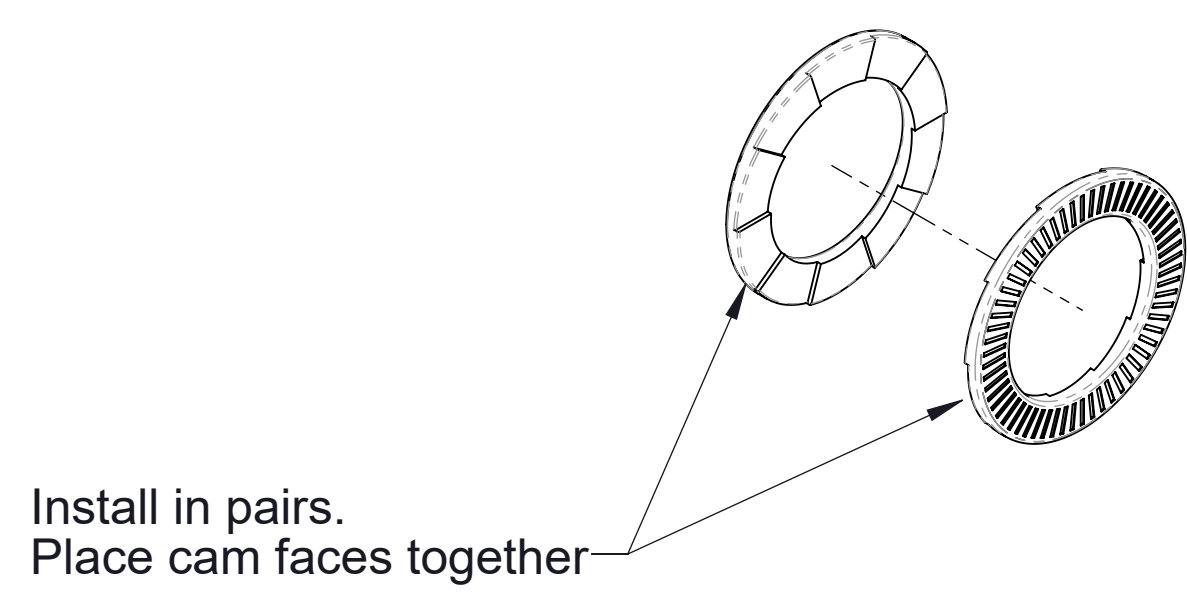
Ref No.	Description
S19	Key-Square, 1/4 x 2 in
S20	Inducer-Impeller
S21	Washer, Nord-Lock, 1/2 in
S22	Screw-Cap, Hex Soc Hd, 1/2-13 x 3-1/2 in



Cross Section View



S22
Clean threads and prime.
Apply Loctite® #242/243 (blue) to threads.
Torque to 80 ft-lb minimum.



Detail A

Impeller Inducer Assembly
(CW impeller rotation shown)